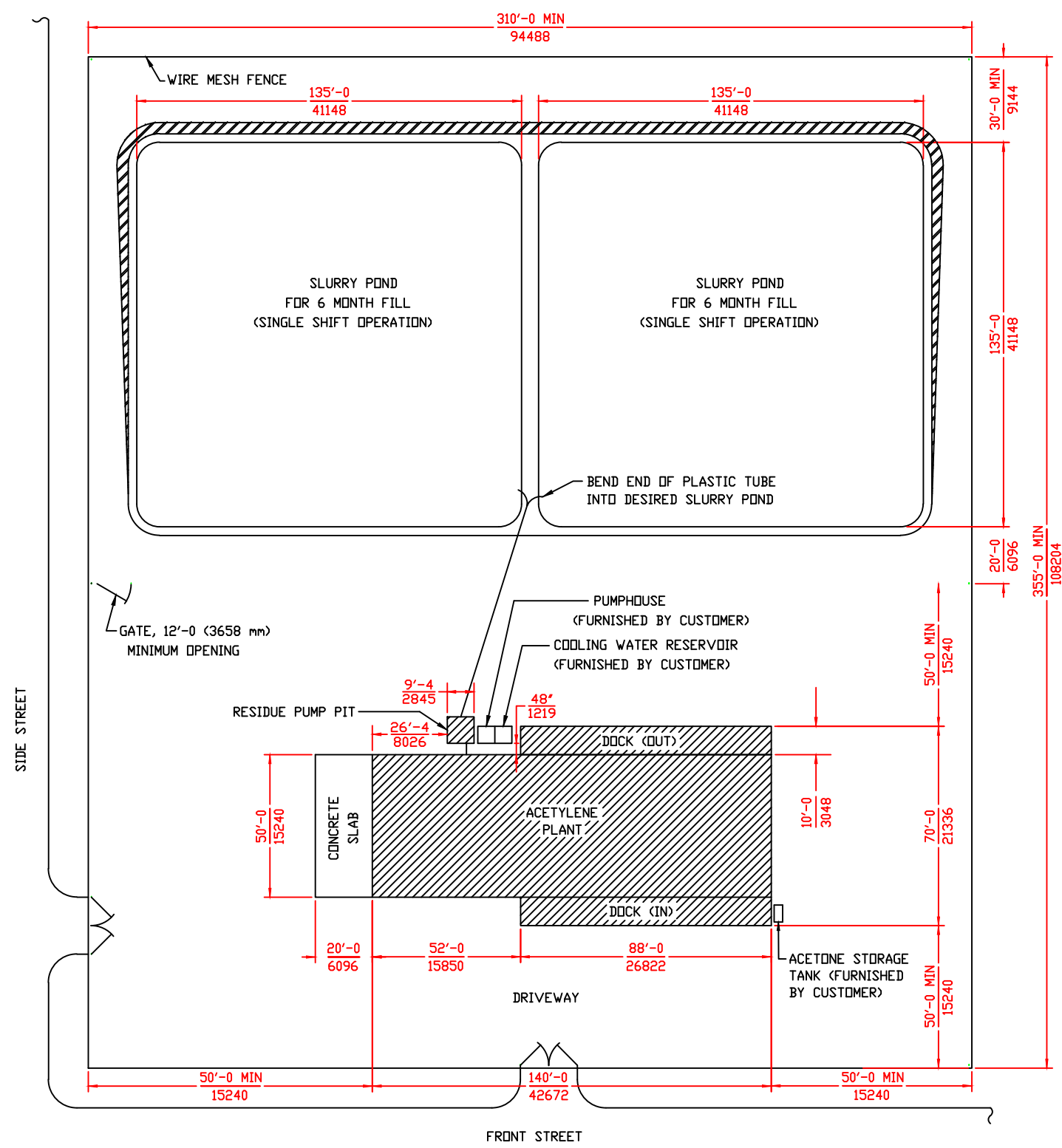
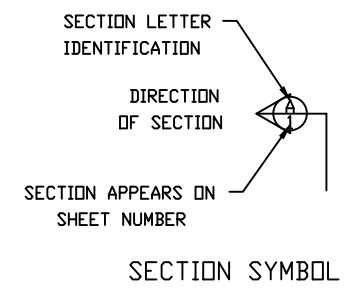
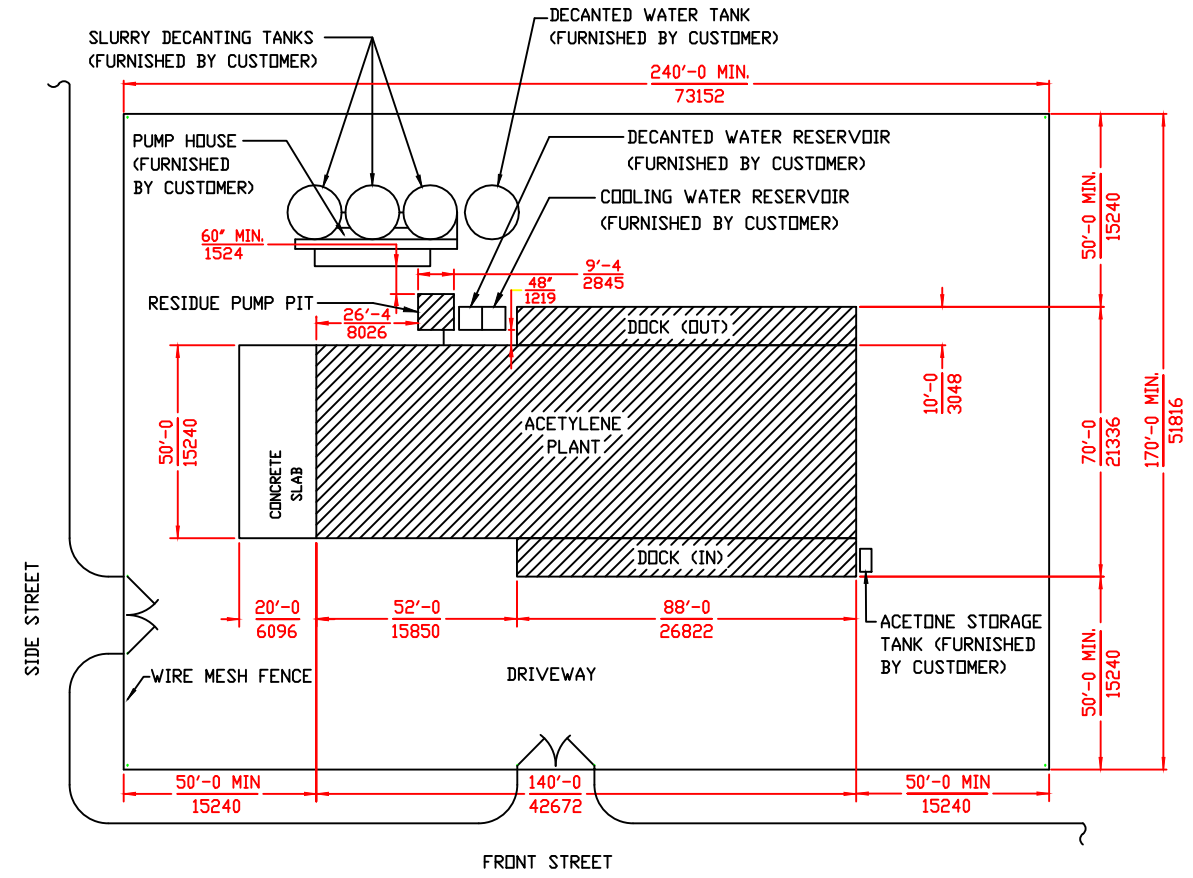
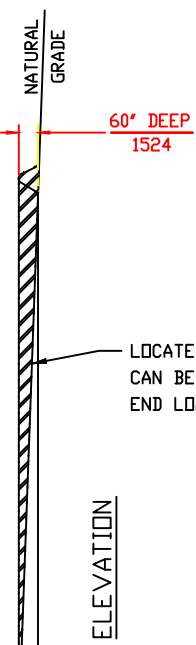


INDEX	
SHEET NO.	NAME
1	TYPICAL SITE PLAN
2	EXTERIOR ELEVATION
3	TYPICAL CROSS SECTION
4	PLANT EQUIPMENT LAYOUT
5	FOUNDATION PLAN
6	DETAILS & SECTIONAL VIEWS
7	RESIDUE PUMP PIT
8	ELECTRICAL CONDUIT PLAN
9	HEATING & LIGHTING PLAN
10	PROCESS & INSTRUMENTATION DIAGRAM
11	PROCESS & INSTRUMENTATION DIAGRAM
12	PROCESS & INSTRUMENTATION DIAGRAM



SITE PLAN WITH SLURRY PONDS



SITE PLAN WITH DECANTING TANKS

SHEET 1 OF 12  
TYPICAL SITE PLAN

COMPANY PROPRIETARY  
REPRODUCTION OR DISCLOSURE IN ANY WAY IS PROHIBITED WITHOUT THE EXPRESS WRITTEN PERMISSION OF REXARC INTERNATIONAL, INC.

ACETYLENE COMPRESSING PLANT  
MODEL 54 SKID MOUNTED

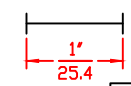
**Rexarc**  
INTERNATIONAL, INC. OHIO, U.S.A.

WEST ALEXANDRIA, LA  
DRAWN BY FAA  
DATE 01/30/14 SCALE 1:300 SVG. NO. 4-03-0253C

APPROVED BY

ALL DIMENSIONS IN FEET-INCHES  $\frac{ft-in}{mm}$   
OVER MILLIMETERS.  
DRAWING MADE TO U.S. STANDARD DIMENSIONS  
AND CONVERTED TO NEAREST MILLIMETER.

FOR REPRODUCTIONS OF THIS DRAWING,  
USE SCALE BELOW AS REFERENCE.

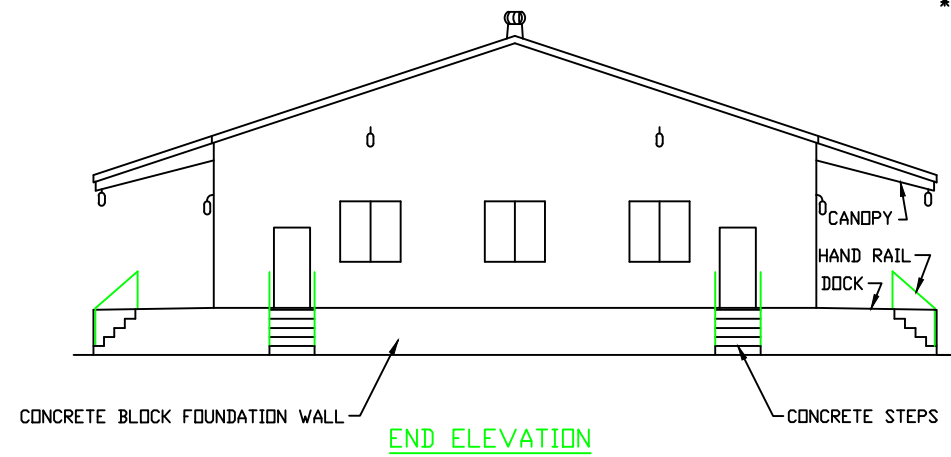


TOLERANCE  
UNLESS  
SPECIFIED:  
1/XX ±1/64,  
XX ±.005,  
XX ±.02,  
L S ±1/2"

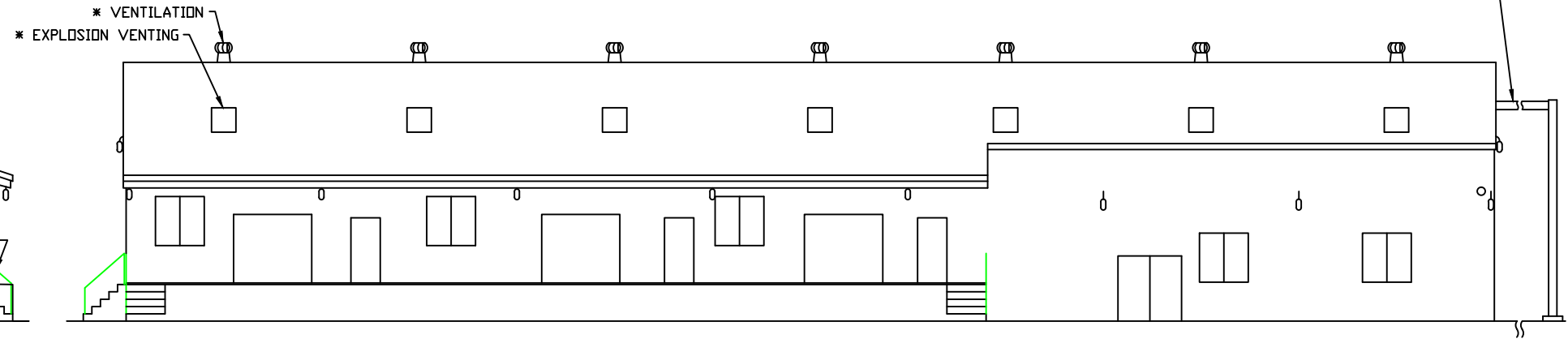
A CD# 12997

\* AS REQUIRED BY NATIONAL FIRE PROTECTION ASSOCIATION PAMPHLET #51A

MONORAIL SHOWN FOR FLOW BINS. FOR CARBIDE IN DRUMS, MONORAIL ENDS AT WALL.

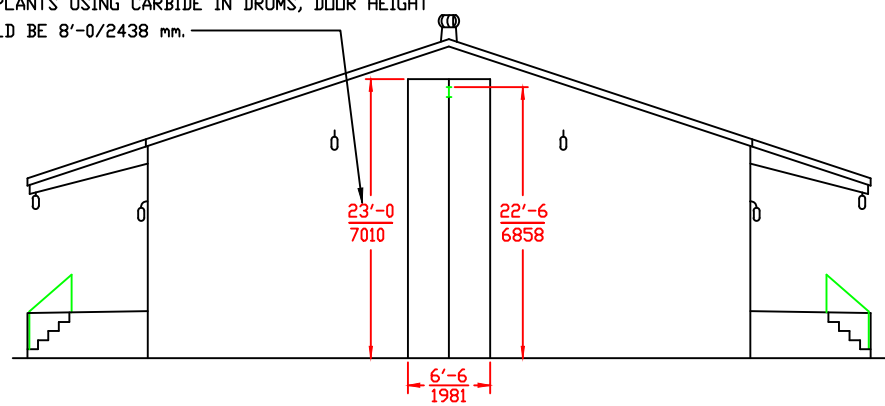


END ELEVATION

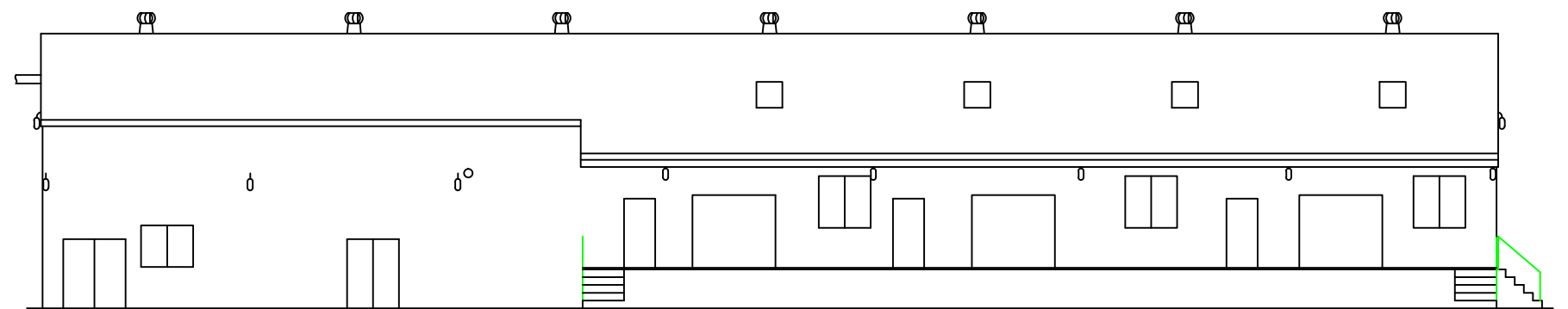


SIDE ELEVATION (BACK)

FOR FLOW BINS (SEE MONORAIL NOTE ABOVE)  
FOR PLANTS USING CARBIDE IN DRUMS, DOOR HEIGHT SHOULD BE 8'-0"/2438 mm.



END ELEVATION



SIDE ELEVATION (FRONT)

ALL DIMENSIONS IN FEET-INCHES  $\frac{ft-in}{mm}$   
OVER MILLIMETERS.  
DRAWING MADE TO U.S. STANDARD DIMENSIONS  
AND CONVERTED TO NEAREST MILLIMETER.

SHEET 2 OF 12  
EXTERIOR ELEVATION

COMPANY PROPRIETARY  
REPRODUCTION OR DISCLOSURE IN ANY WAY IS PROHIBITED WITHOUT THE  
EXPRESS WRITTEN PERMISSION OF REXARC INTERNATIONAL, INC.

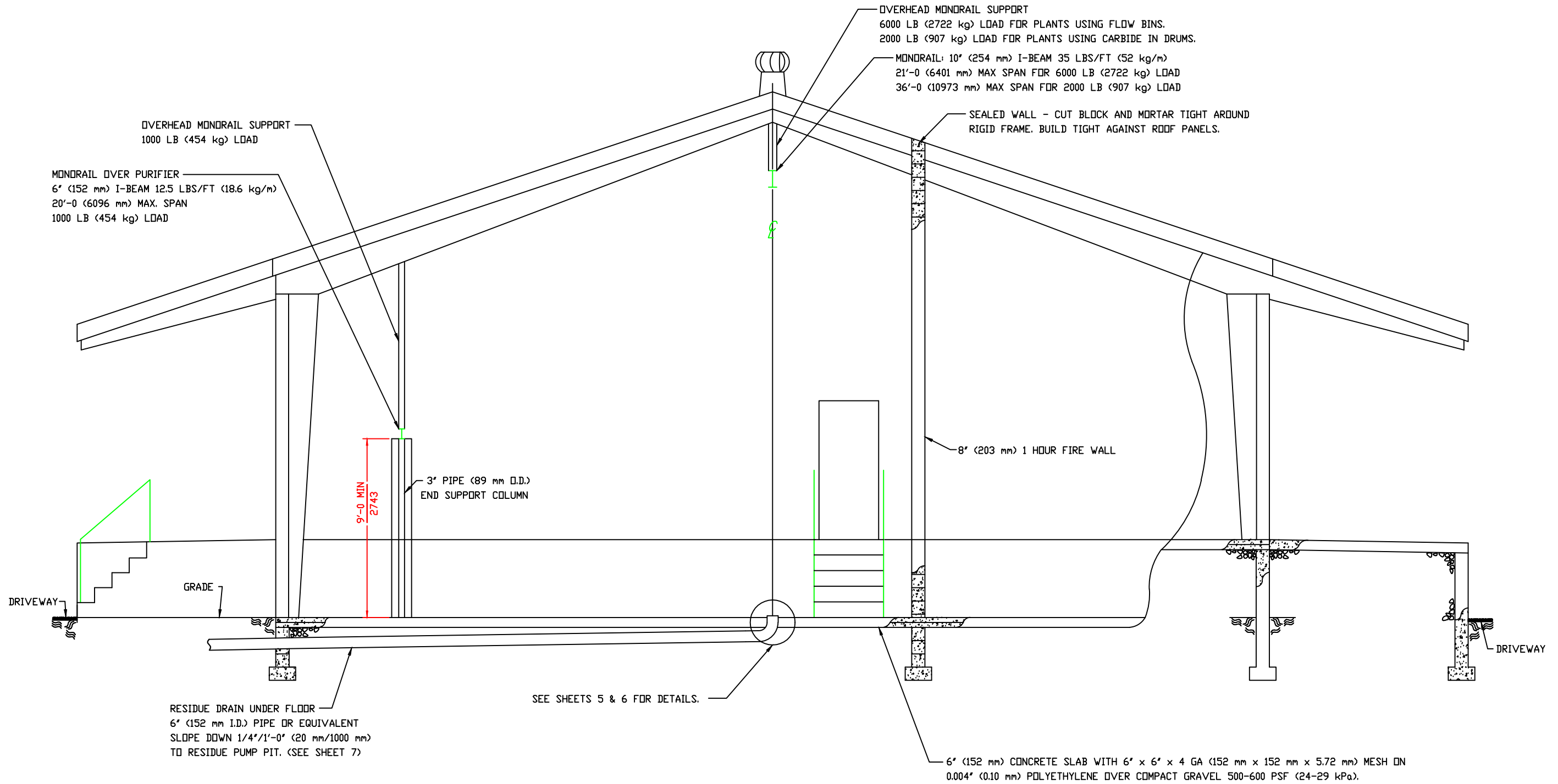
ACETYLENE COMPRESSING PLANT  
MODEL 54 SKID MOUNTED

**Rexarc**  
INTERNATIONAL, INC.

WEST ALEXANDRIA, OHIO, U.S.A.  
DRAWN BY FAA APPROVED BY  
DATE 01/30/14 SCALE 1:96 DWG. NO. 4-03-0253C

TOLERANCE  
UNLESS  
SPECIFIED:  
1/XX ±1/64,  
.XX ±.005,  
.XX ±.02,  
L S ±1/2"

A CD# 12997



SHEET 3 OF 12  
TYPICAL CROSS SECTION

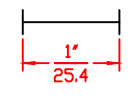
COMPANY PROPRIETARY  
REPRODUCTION OR DISCLOSURE IN ANY WAY IS PROHIBITED WITHOUT THE EXPRESS WRITTEN PERMISSION OF REXARC INTERNATIONAL, INC.  
ACETYLENE COMPRESSING PLANT  
MODEL 54 SKID MOUNTED

**Rexarc**  
INTERNATIONAL, INC. OHIO, U.S.A.

WEST ALEXANDRIA, LA  
DRAWN BY FAA  
DATE 01/30/14 SCALE 1:32 DWG. NO. 4-03-0253C

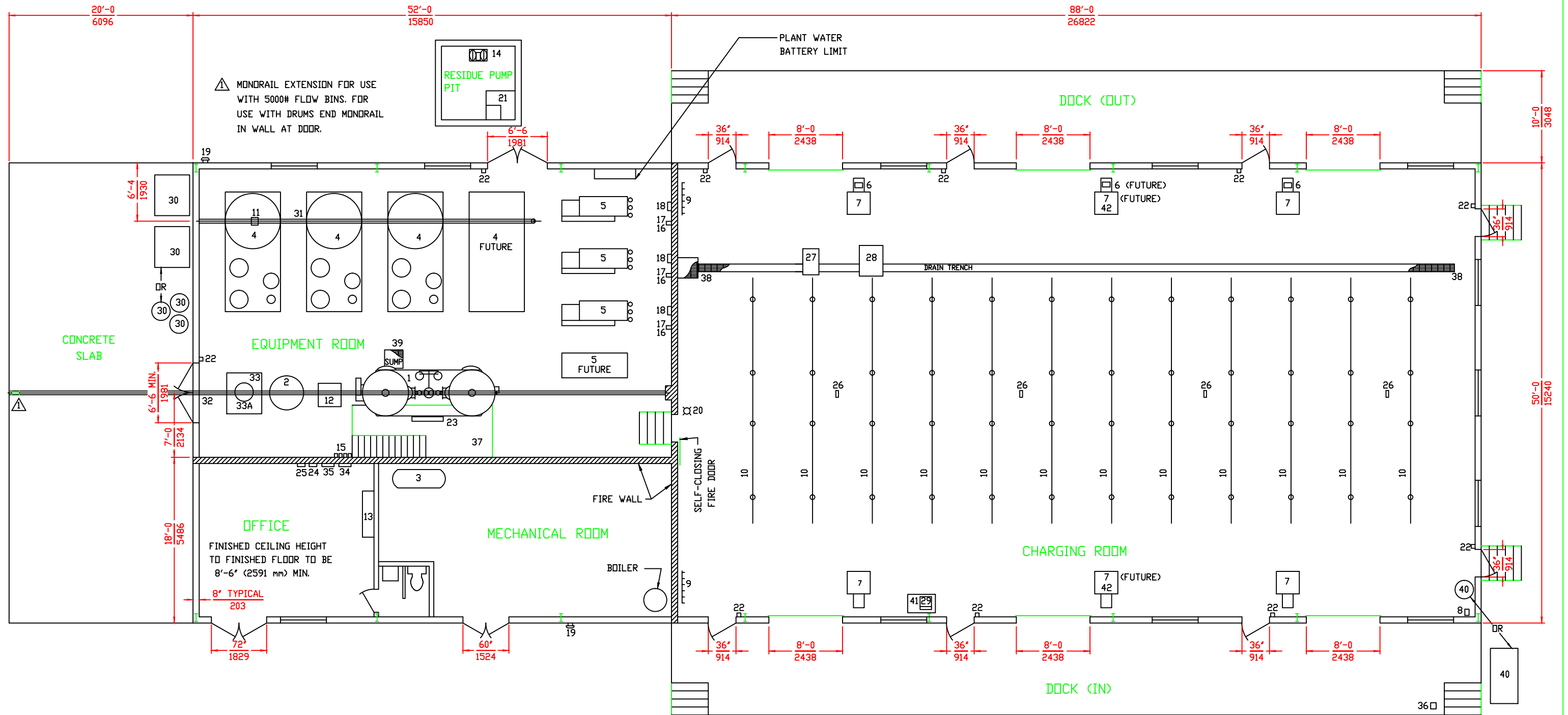
ALL DIMENSIONS IN FEET-INCHES  $\frac{ft-in}{mm}$   
OVER MILLIMETERS.  
DRAWING MADE TO U.S. STANDARD DIMENSIONS AND  
CONVERTED TO NEAREST MILLIMETER.  
THESE FOUNDATION PLANS SUBJECT TO LOCAL BUILDING  
CODES WHERE APPLICABLE

FOR REPRODUCTIONS OF THIS DRAWING,  
USE SCALE BELOW AS REFERENCE.



TOLERANCE  
UNLESS  
SPECIFIED:  
1/XX ±1/64,  
.XX ±.005,  
.XX ±.02,  
L S ±1/2"

A CD# 12997



**DET. EQUIPMENT LIST**

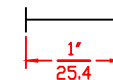
- |                                  |   |
|----------------------------------|---|
| 1 ACETYLENE GENERATOR            | 16 ACETYLENE COMPRESSOR STOP SWITCH             |
| 2 CARBIDE FILL CART              | 17 ACETYLENE COMPRESSOR FAST/SLOW SWITCH        |
| 3 AIR COMPRESSOR                 | 18 PRESSURE SWITCH ENCLOSURE                    |
| 4 PROCESS SKID                   | 19 ALARM BELL                                   |
| 5 PUMPING SKID                   | 20 GENERATOR PILOT LIGHT                        |
| 6 ACETYLENE MONITOR (USA PLANTS) | 21 RESIDUE COLLECTOR                            |
| 7 DIGITAL SCALE                  | 22 EMERGENCY STOP PUSHBUTTON                    |
| 8 ACETONE PUMP                   | 23 LUBRICATOR SYSTEM (PART OF GENERATOR)        |
| 9 DRAINBACK MANIFOLD             | 24 LUBRICATOR CONTROL PANEL (PART OF GENERATOR) |
| 10 CHARGING MANIFOLD             | 25 ACETYLENE DETECTOR CONTROL PANEL             |
| 11 CHAIN HOIST                   | 26 ACETYLENE DETECTOR                           |
| 12 AIR HOIST                     | 27 B CYLINDER RACK (USA PLANTS)                 |
| 13 MOTOR CONTROL CENTER          | 28 MC CYLINDER RACK (USA PLANTS)                |
| 14 RESIDUE PUMP                  | 29 BENCH SCALE (USA PLANTS)                     |
| 15 GENERATOR CONTROL SWITCHES    |   |

**ITEMS FURNISHED BY CUSTOMER**

- |  |
|--|
| 30 CARBIDE CONTAINER                           |
| 31 MONORAIL OVER PURIFIER                      |
| 32 MONORAIL OVER GENERATOR                     |
| 33 CARBIDE CONTAINER STAND (USA PLANTS)        |
| 33A TILTING TRUNNION (FOR DRUMS)               |
| 34 MAIN SERVICE PANEL                          |
| 35 LIGHTING PANEL                              |
| 36 CYLINDER VISE                               |
| 37 OPERATOR'S PLATFORM                         |
| 38 DRAIN TRENCH & BASIN GRATING (NON-SPARKING) |
| 39 SUMP GRATING (NON-SPARKING)                 |
| 40 ACETONE DRUM OR TANK                        |
| 41 BENCH (USA PLANTS)                          |
| 42 PLATE OVER FUTURE SCALE PITS                |

ALL DIMENSIONS IN FEET-INCHES  $\frac{ft-in}{mm}$   
OVER MILLIMETERS.  
DRAWING MADE TO U.S. STANDARD DIMENSIONS  
AND CONVERTED TO NEAREST MILLIMETER.

FOR REPRODUCTIONS OF THIS DRAWING,  
USE SCALE BELOW AS REFERENCE.



TOLERANCE  
UNLESS  
SPECIFIED:  
1/XX ±1/64,  
.XX ±.005,  
.XX ±.02,  
L S ±1/2"

A CD# 12997

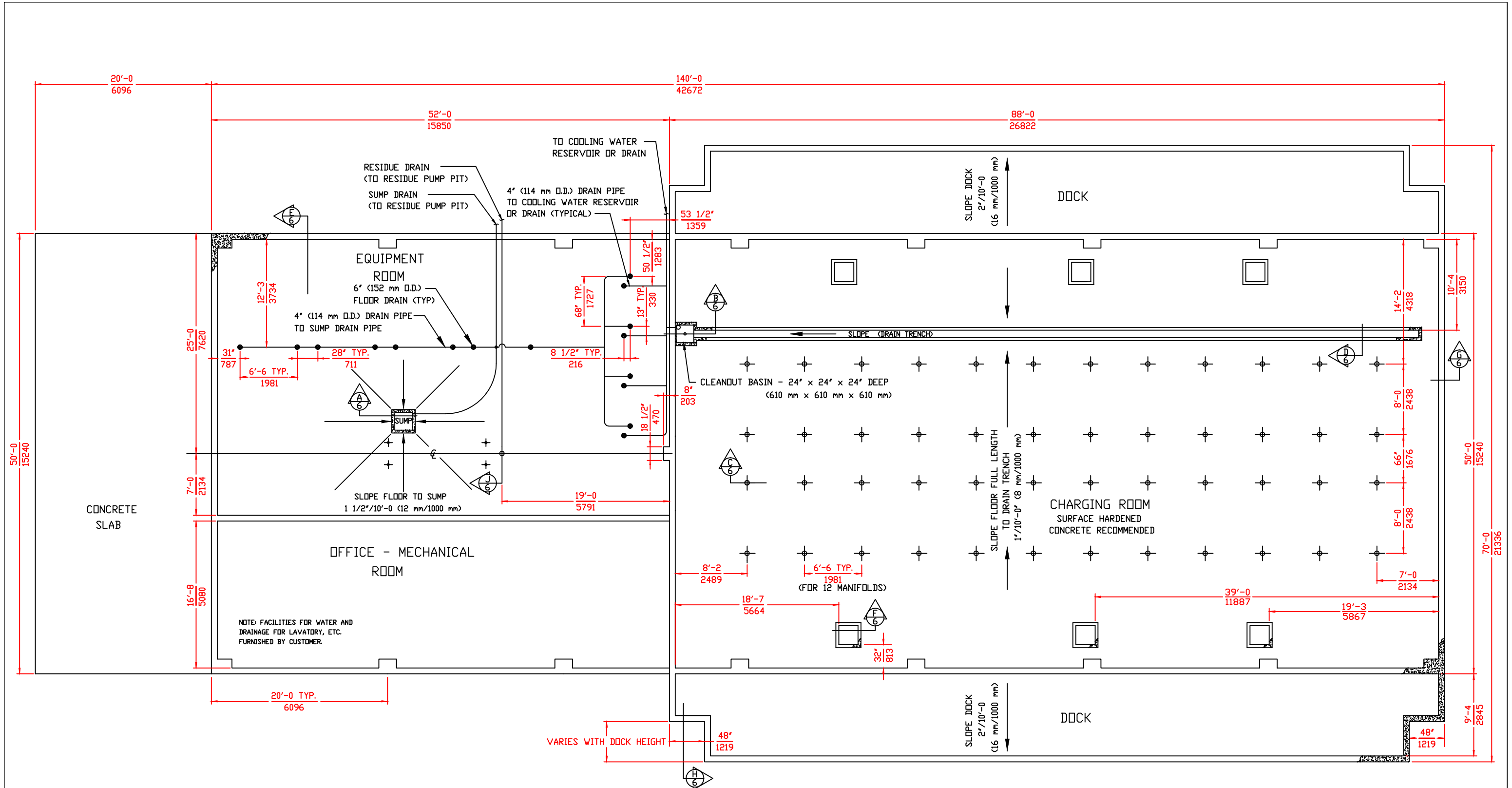
SHEET 4 OF 12  
PLANT EQUIPMENT LAYOUT

COMPANY PROPRIETARY  
REPRODUCTION OR DISCLOSURE IN ANY WAY IS PROHIBITED WITHOUT THE  
EXPRESS WRITTEN PERMISSION OF REXARC INTERNATIONAL, INC.

ACETYLENE COMPRESSING PLANT  
MODEL 54 SKID MOUNTED

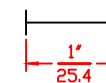
**Rexarc**  
INTERNATIONAL, INC.

WEST ALEXANDRIA, OHIO, U.S.A.  
DRAWN BY FAA APPROVED BY  
DATE 01/30/14 SCALE 1:64 SVG. NO. 4-03-0253C



ALL DIMENSIONS IN FEET-INCHES  $\frac{\text{ft-in}}{\text{mm}}$   
 OVER MILLIMETERS.  
 DRAWING MADE TO U.S. STANDARD DIMENSIONS AND CONVERTED  
 TO NEAREST MILLIMETER. (EXCEPT MILLIMETERS TO 2 DECIMAL  
 PLACES WHERE APPLICABLE)  
 THESE FOUNDATION PLANS SUBJECT TO LOCAL BUILDING  
 CODES WHERE APPLICABLE

FOR REPRODUCTIONS OF THIS DRAWING,  
 USE SCALE BELOW AS REFERENCE.



SHEET 5 OF 12  
 FOUNDATION PLAN

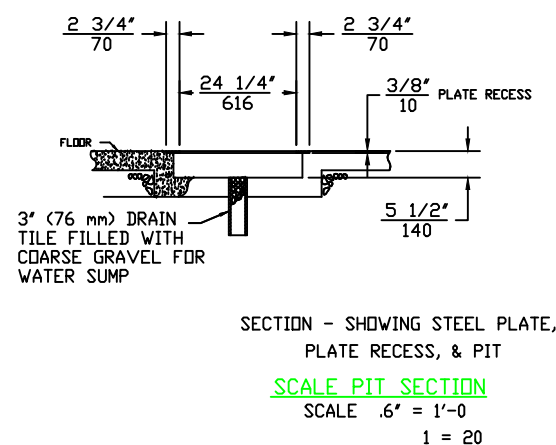
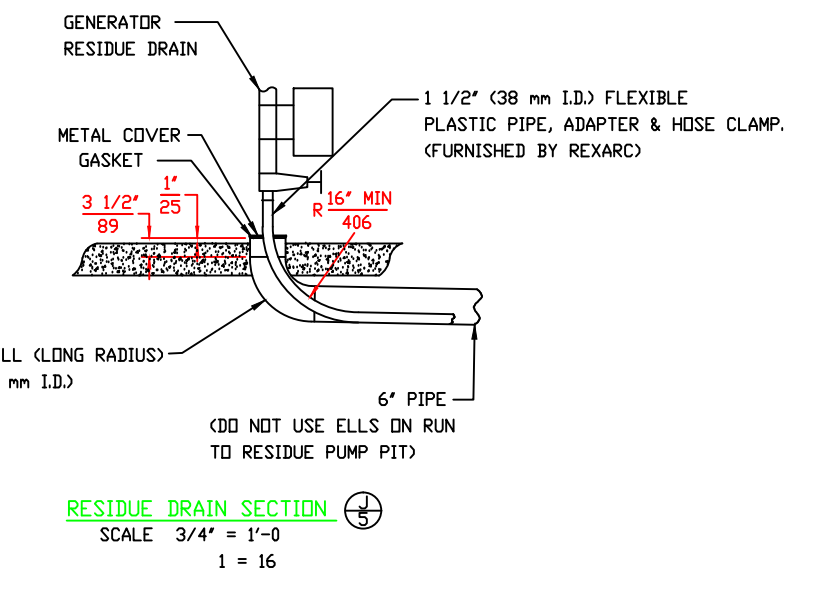
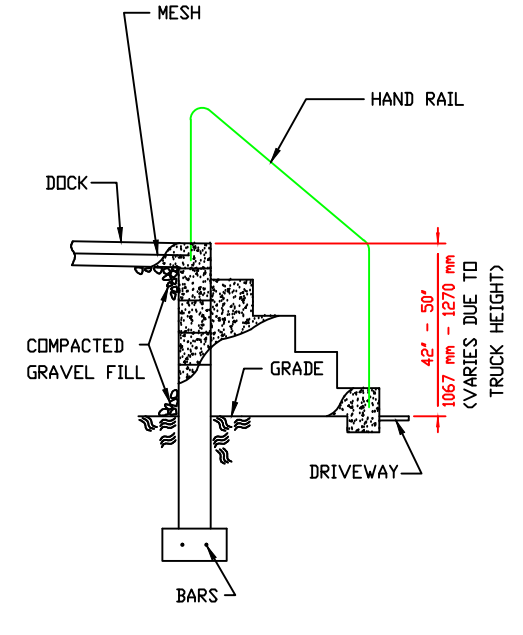
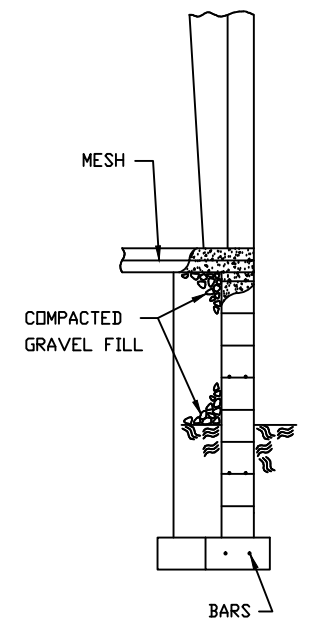
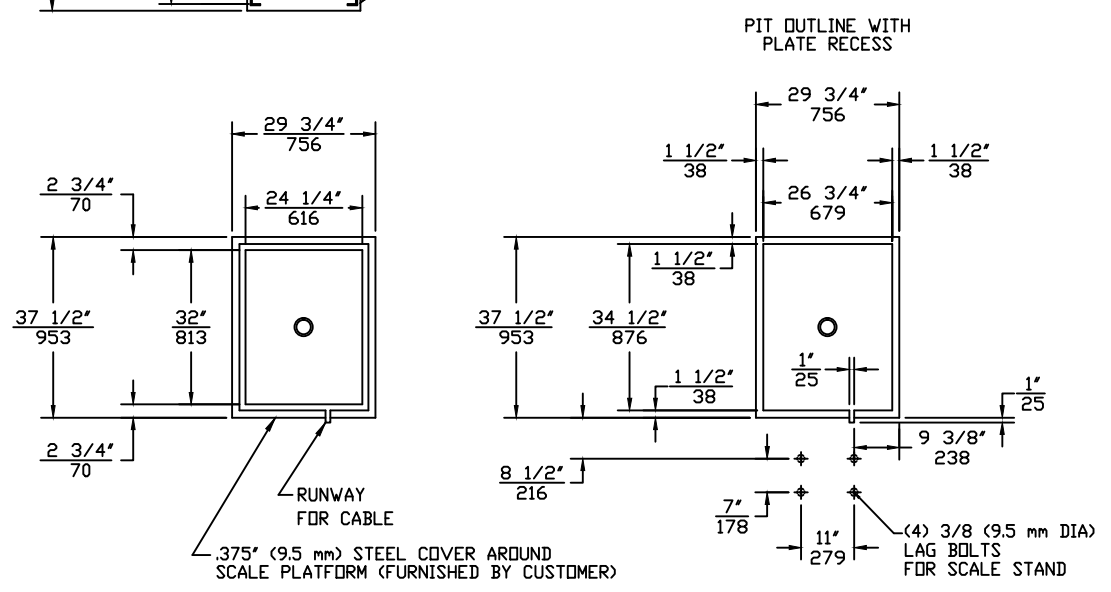
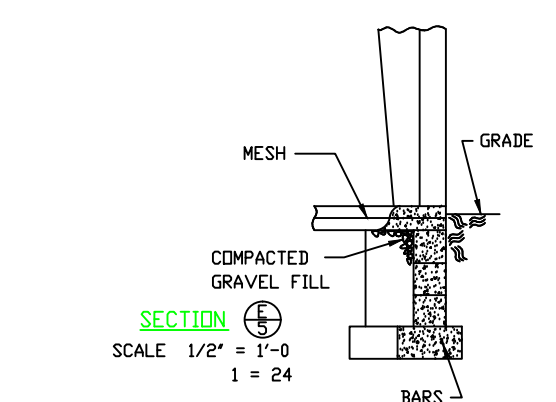
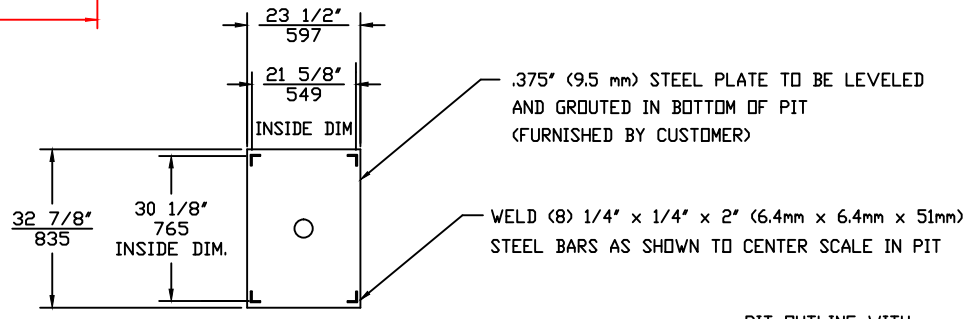
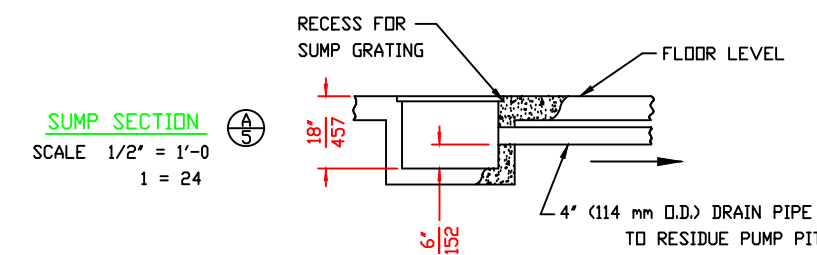
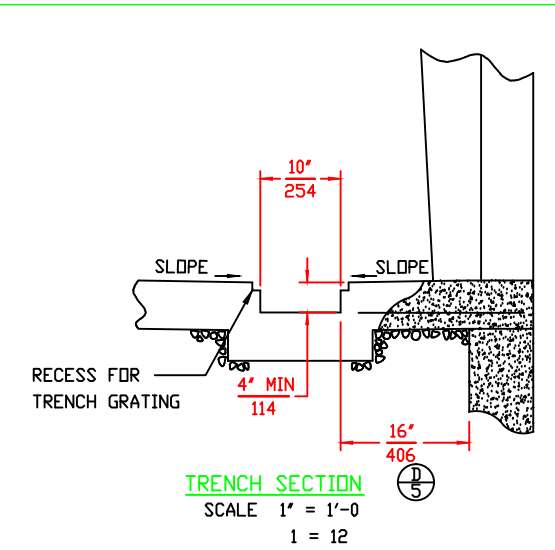
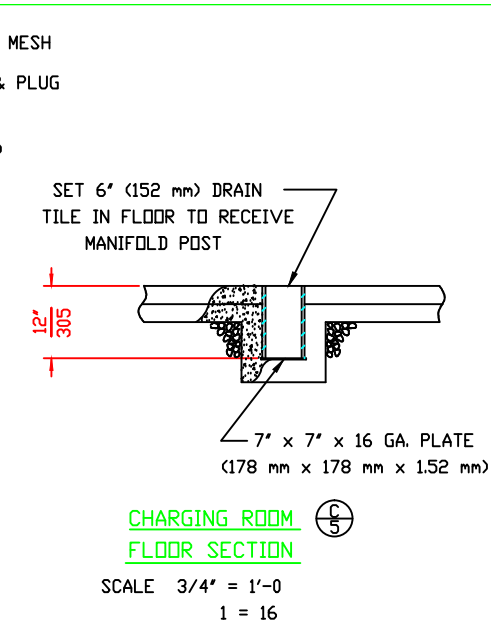
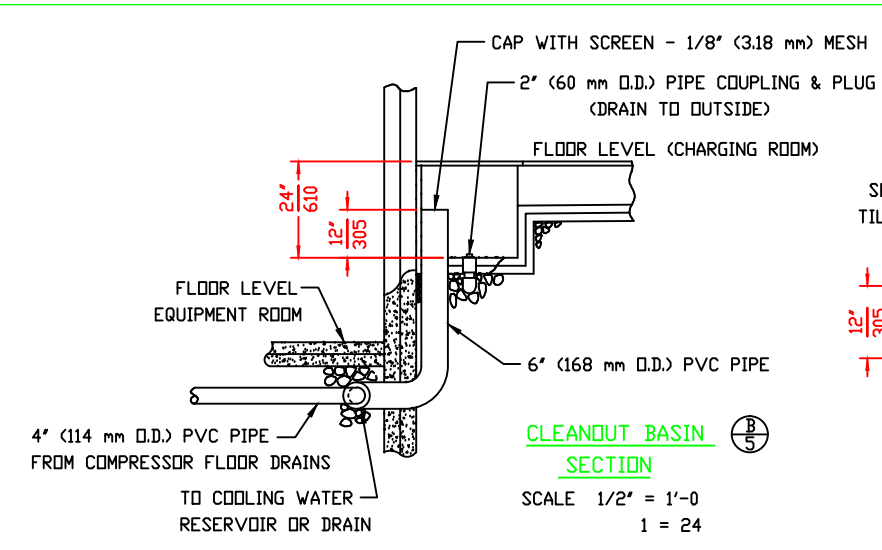
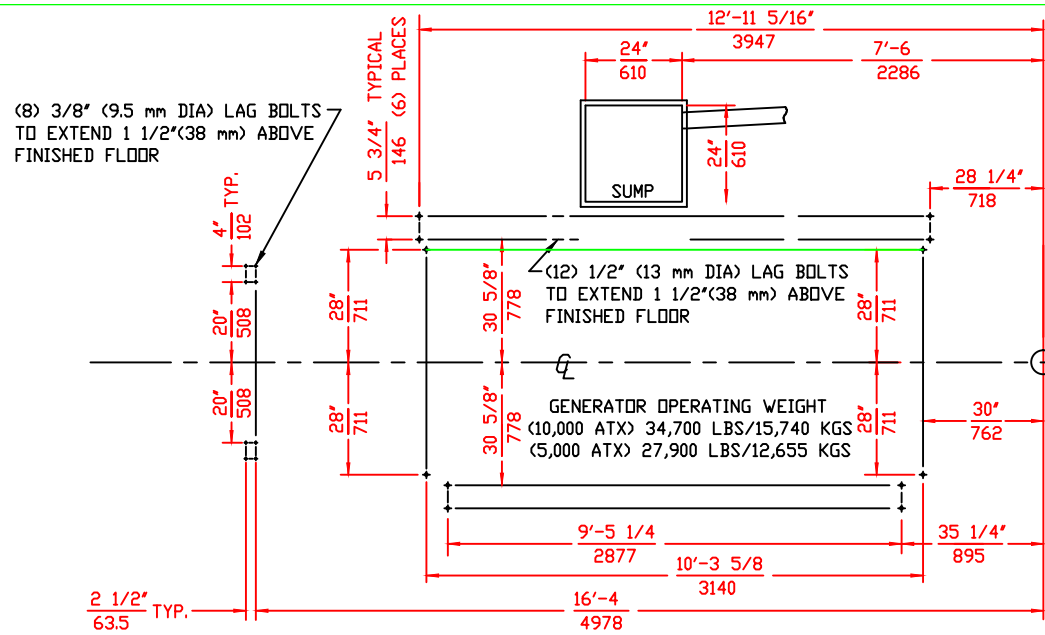
COMPANY PROPRIETARY  
 REPRODUCTION OR DISCLOSURE IN ANY WAY IS PROHIBITED  
 WITHOUT THE EXPRESS WRITTEN PERMISSION OF REXARC INTERNATIONAL, INC.  
 ACETYLENE COMPRESSING PLANT  
 MODEL 54 SKID MOUNTED

**Rexarc**  
 INTERNATIONAL, INC.

WEST ALEXANDRIA, OHIO, U.S.A.  
 DRAWN BY FAA  
 APPROVED BY  
 DATE 01/30/14 SCALE 1:64 DWG. NO. 4-03-0253C

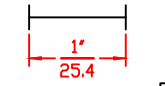
A CD# 12997

TOLERANCE  
 UNLESS  
 SPECIFIED:  
 1/XX ±1/64,  
 .XXX ±.005,  
 .XX ±.02,  
 .X ±.1/2"



ALL DIMENSIONS IN FEET-INCHES ft-in  
OVER MILLIMETERS. mm  
DRAWING MADE TO U.S. STANDARD DIMENSIONS AND CONVERTED TO NEAREST MILLIMETER. (EXCEPT MILLIMETERS TO 2 DECIMAL PLACES WHERE APPLICABLE)  
THESE FOUNDATION PLANS SUBJECT TO LOCAL BUILDING CODES WHERE APPLICABLE.

FOR REPRODUCTIONS OF THIS DRAWING, USE SCALE BELOW AS REFERENCE.



TOLERANCE UNLESS SPECIFIED:  
1/X ±1/64,  
.XX ±.005,  
.XX ±.02,  
.X ±.1/2"

SHEET 6 OF 12  
DETAILS & SECTIONAL VIEWS

COMPANY PROPRIETARY  
REPRODUCTION OR DISCLOSURE IN ANY WAY IS PROHIBITED WITHOUT THE EXPRESS WRITTEN PERMISSION OF REXARC INTERNATIONAL, INC.

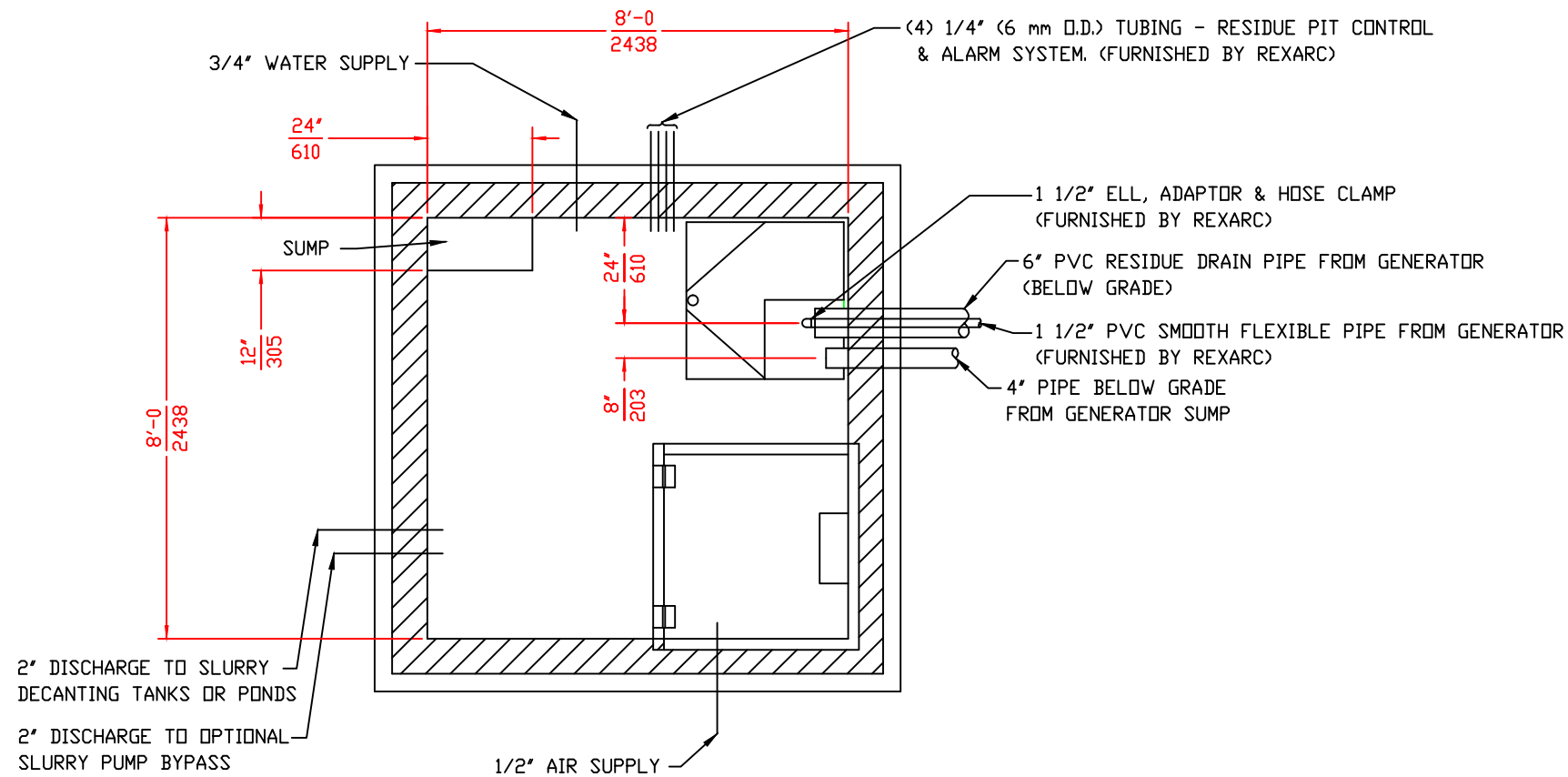
ACETYLENE COMPRESSING PLANT  
MODEL 54 SKID MOUNTED

**Rexarc**  
INTERNATIONAL, INC. OHIO, U.S.A.

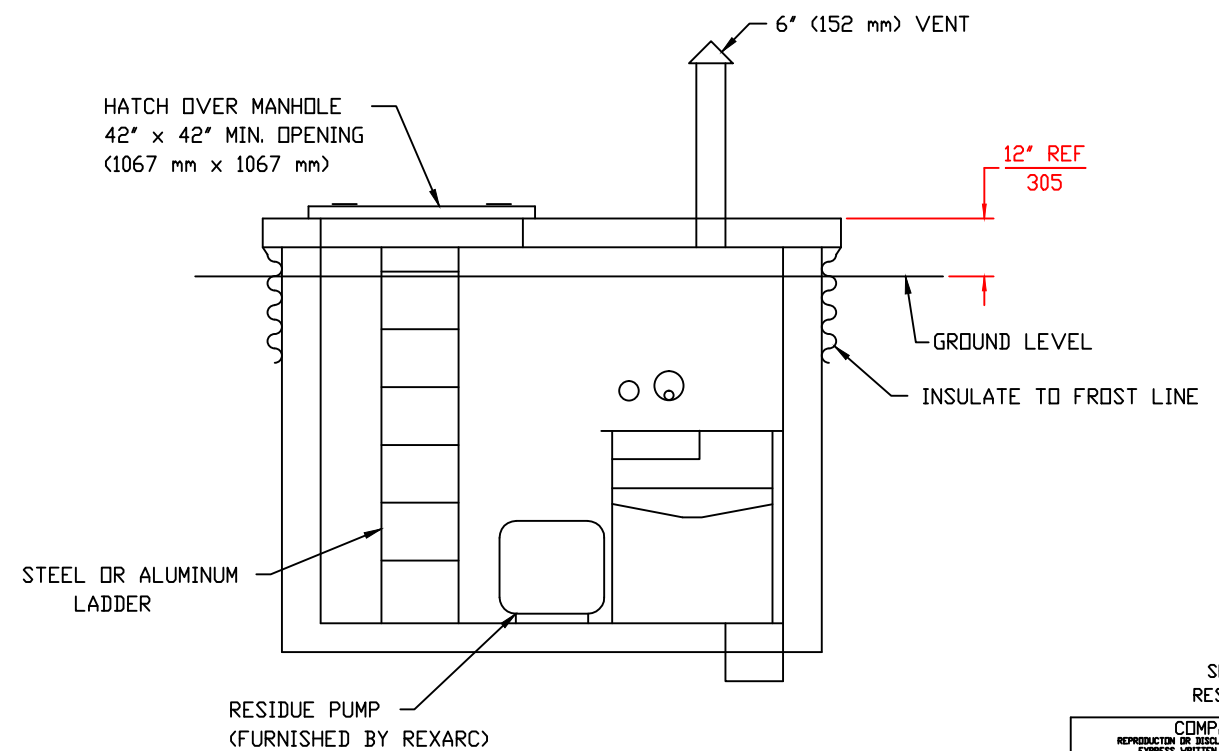
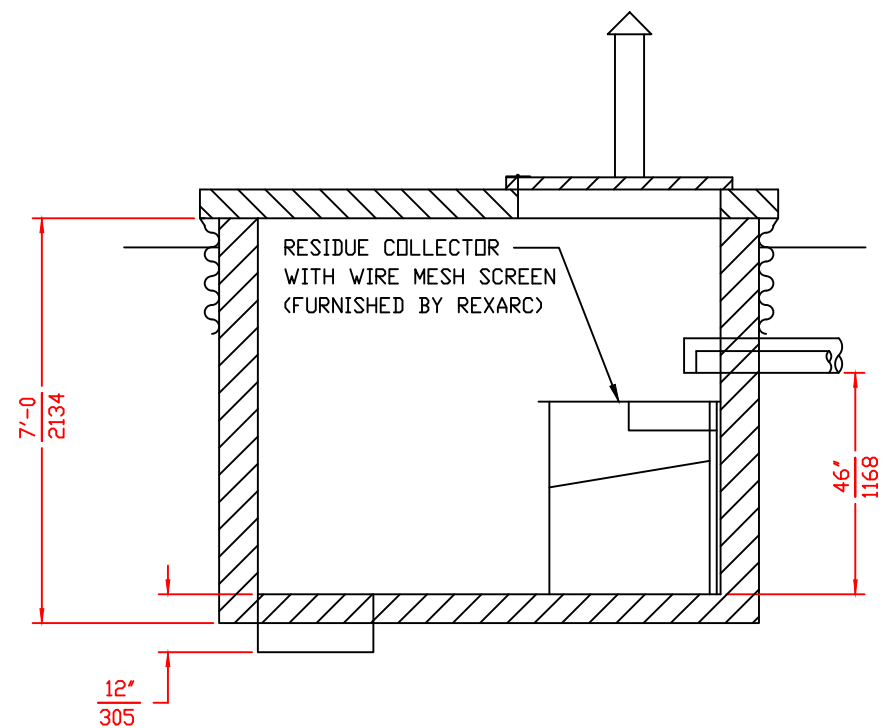
WEST ALEXANDRIA, LA  
DRAWN BY FAA  
DATE 01/30/14 SCALE \_\_\_\_\_ DWG. NO. 4-03-0253C

APPROVED BY \_\_\_\_\_

[A] CD# 12997



- 1) SLOPE FLOOR TO SUMP 1"/10'-0" (8 mm/1000 mm)
- 2) ALL DIMENSIONS IN FEET-INCHES  $\frac{\text{ft-in}}{\text{mm}}$  OVER MILLIMETERS.
- 3) DRAWING MADE TO U.S. STANDARD DIMENSIONS AND CONVERTED TO NEAREST MILLIMETER.



SHEET 7 OF 12  
RESIDUE PUMP PIT

COMPANY PROPRIETARY  
REPRODUCTION OR DISCLOSURE IN ANY WAY IS PROHIBITED WITHOUT THE EXPRESS WRITTEN PERMISSION OF REXARC INTERNATIONAL, INC.

ACETYLENE COMPRESSING PLANT  
MODEL 54 SKID MOUNTED

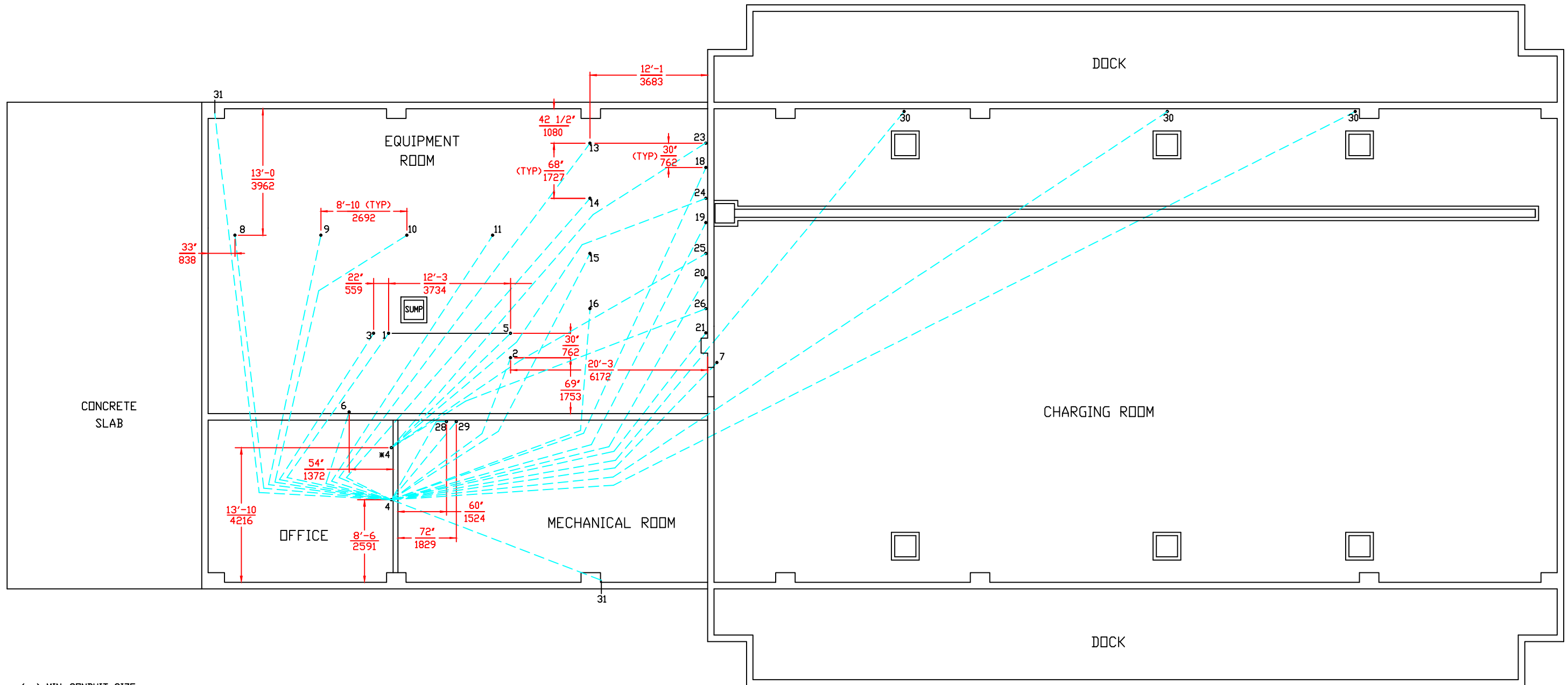
**Rexarc**  
INTERNATIONAL, INC.

WEST ALEXANDRIA, OHIO, U.S.A.  
DRAWN BY FAA APPROVED BY

A CD# 12997

TOLERANCE UNLESS SPECIFIED:  
1/XX ±1/64,  
XX ±0.05,  
XX ±0.2,  
L S ±1/2"

DATE 01/30/14 SCALE \_\_\_\_\_ DWG. NO. 4-03-0253C

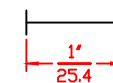


( ) MIN. CONDUIT SIZE  
 [ ] ACTUAL CONDUIT SIZE AT DEVICE  
 \* INTRINSICALLY SAFE WIRING

- |  |   |
|--|---|
| 1 GENERATOR HOPPER #1 MOTOR (1/2") [3/4"]                      | 18 ACETYLENE COMPRESSOR #1 (STOP SWITCH & FAST/SLOW SWITCH) (3/4") [3/4"]     |
| 2 GENERATOR HOPPER #2 MOTOR (1/2") [3/4"]                      | 19 ACETYLENE COMPRESSOR #2 (STOP SWITCH & FAST/SLOW SWITCH) (3/4") [3/4"]     |
| 3 GENERATOR AGITATOR MOTOR (1/2") [3/4"]                       | 20 ACETYLENE COMPRESSOR #3 (STOP SWITCH & FAST/SLOW SWITCH) (3/4") [3/4"]     |
| 4 MOTOR CONTROL CENTER   | 21 FUTURE ACETYLENE COMPRESSOR (STOP SWITCH & FAST/SLOW SWITCH) (3/4") [3/4"] |
| *5 GENERATOR PRESSURE SWITCH ENCLOSURE (1/2") [1/2"]           | *23 ACETYLENE COMPRESSOR #1 PRESSURE SWITCH ENCLOSURE (1/2") [1/2"]           |
| 6 GENERATOR CONTROL SWITCHES (3/4") [3/4"]                     | *24 ACETYLENE COMPRESSOR #2 PRESSURE SWITCH ENCLOSURE (1/2") [1/2"]           |
| 7 GENERATOR PILOT LIGHT (1/2") [1/2"]                          | *25 ACETYLENE COMPRESSOR #3 PRESSURE SWITCH ENCLOSURE (1/2") [1/2"]           |
| 8 PROCESS SKID #1 (SCRUBBER LEVEL CONTROLS) (1/2") [3/4"]      | *26 FUTURE ACETYLENE COMPRESSOR PRESSURE SWITCH ENCLOSURE (1/2") [1/2"]       |
| 9 PROCESS SKID #2 (SCRUBBER LEVEL CONTROLS) (1/2") [3/4"]      | 28 AIR COMPRESSOR MOTOR (1 1/4") [1 1/2"]                                     |
| 10 PROCESS SKID #3 (SCRUBBER LEVEL CONTROLS) (1/2") [3/4"]     | 29 AIR COMPRESSOR SELECTOR SWITCH (1/2") [1/2"]                               |
| 11 FUTURE PROCESS SKID (SCRUBBER LEVEL CONTROLS) (1/2") [3/4"] | 30 ACETYLENE MONITOR (3/4") [3/4"]  |
| 13 ACETYLENE COMPRESSOR MOTOR #1 (1 1/4") [1 1/2"]             | 31 ALARM BELL (1/2") [3/4"]   |
| 14 ACETYLENE COMPRESSOR MOTOR #2 (1 1/4") [1 1/2"]             |   |
| 15 ACETYLENE COMPRESSOR MOTOR #3 (1 1/4") [1 1/2"]             |   |
| 16 FUTURE ACETYLENE COMPRESSOR MOTOR (1 1/4") [1 1/2"]         |   |

ALL DIMENSIONS IN FEET-INCHES  $\frac{ft-in}{mm}$   
 OVER MILLIMETERS.  
 DRAWING MADE TO U.S. STANDARD DIMENSIONS  
 AND CONVERTED TO NEAREST MILLIMETER.

FOR REPRODUCTIONS OF THIS DRAWING,  
 USE SCALE BELOW AS REFERENCE.



A CD# 12997

TOLERANCE  
 UNLESS  
 SPECIFIED:  
 1/XX ±1/64,  
 .XXX ±0.05,  
 .XX ±0.2,  
 .X ±1/2"

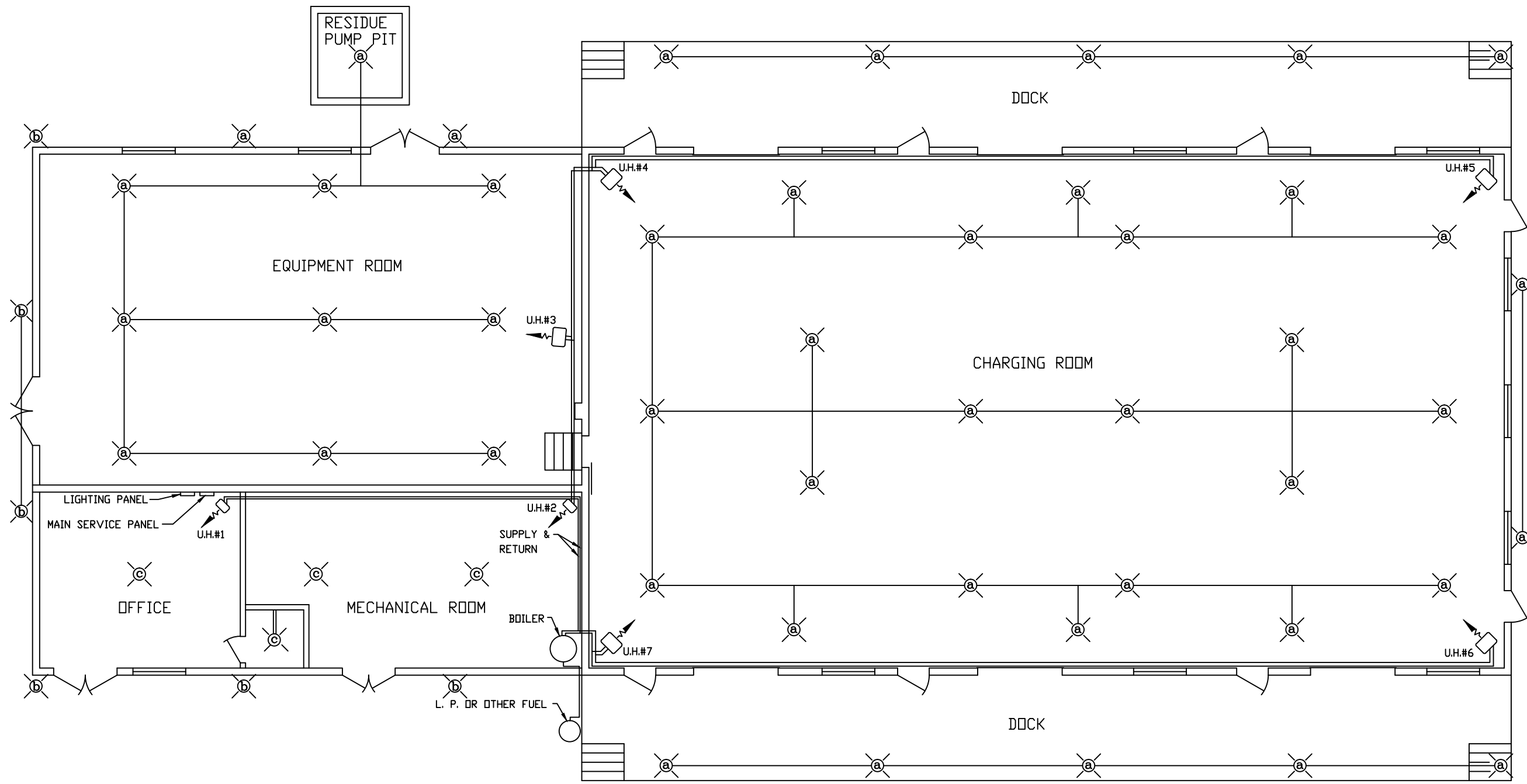
SHEET 8 OF 12  
 ELECTRICAL CONDUIT PLAN

COMPANY PROPRIETARY  
 REPRODUCTION OR DISCLOSURE IN ANY WAY IS PROHIBITED WITHOUT THE  
 EXPRESS WRITTEN PERMISSION OF REXARC INTERNATIONAL, INC.  
 ACETYLENE COMPRESSING PLANT  
 MODEL 54 SKID MOUNTED

**Rexarc**  
 INTERNATIONAL, INC.

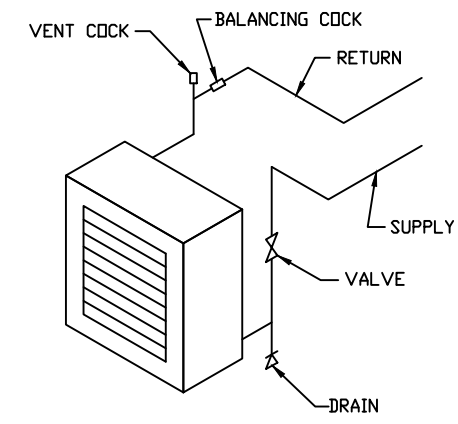
WEST ALEXANDRIA, OHIO, U.S.A.  
 DRAWN BY FAA APPROVED BY  
 DATE 10/29/96 SCALE 1:64 DWG. NO. 4-03-0253C





**ELECTRICAL SPECIFICATIONS**

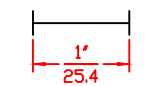
- 1 ALL ELECTRICAL WIRING SHALL BE INSTALLED IN ACCORDANCE WITH NATIONAL FIRE PROTECTION ASSOCIATION PAMPHLET #51A.
- 2 ALL LIGHTS SHALL BE CONTROLLED FROM A PANEL IN THE MECHANICAL ROOM.
- 3 INSTALL SEALING FITTINGS ON ALL CONDUIT LEAVING COMPRESSING PLANT BUILDING.
- 4 FIXTURE CLASS #1 GROUP A (CROUSE HINDS # EVA 2921 PENDANT) LOCATED 10'-0 (3048 mm) ABOVE FINISHED FLOOR EXCEPT AROUND GENERATOR & SCALES. LIGHT FIXTURE ABOVE ALL SCALE PLATFORMS AT 8'-0 (2438 mm) ABOVE FINISHED FLOOR.
- 5 FIXTURE (CROUSE HINDS # VDA 23 GP) OR EQUIVALENT.
- 6 FIXTURE (CROUSE HINDS - PORCELAIN LAMP HOLDER) OR EQUIVALENT.
- 7 CONDUIT MAY BE INSTALLED IN FLOOR SLABS.
- 8 ALL ITEMS ABOVE FURNISHED & INSTALLED BY ELECTRICAL CONTRACTOR.



(U. H.) UNIT HEATER PIPING

- A COPPER ALLOYS CONTAINING MORE THAN 65% COPPER ARE NOT TO BE USED WHERE THEY MAY BE EXPOSED TO ACETYLENE.
- B UNIT HEATERS U. H. #3 THROUGH U. H. #7 ARE TO BE CLASS 1 GROUP D.
- C HEATING SYSTEM FURNISHED & INSTALLED BY HEATING CONTRACTOR.

FOR REPRODUCTIONS OF THIS DRAWING, USE SCALE BELOW AS REFERENCE.



TOLERANCE UNLESS SPECIFIED:  
 1/XX ±1/64,  
 .XX ±.005,  
 .XX ±.02,  
 L S ±1/2"

A CD# 12997

SHEET 9 OF 12  
HEATING AND LIGHTING PLAN

COMPANY PROPRIETARY  
REPRODUCTION OR DISCLOSURE IN ANY WAY IS PROHIBITED WITHOUT THE EXPRESS WRITTEN PERMISSION OF REXARC INTERNATIONAL, INC.

ACETYLENE COMPRESSING PLANT  
MODEL 54 SKID MOUNTED

**Rexarc**  
INTERNATIONAL, INC. OHIO, U.S.A.

WEST ALEXANDRIA, LA  
DRAWN BY FAA  
DATE 01/30/14 SCALE 1:64  
APPROVED BY  
DWG. NO. 4-03-0253C