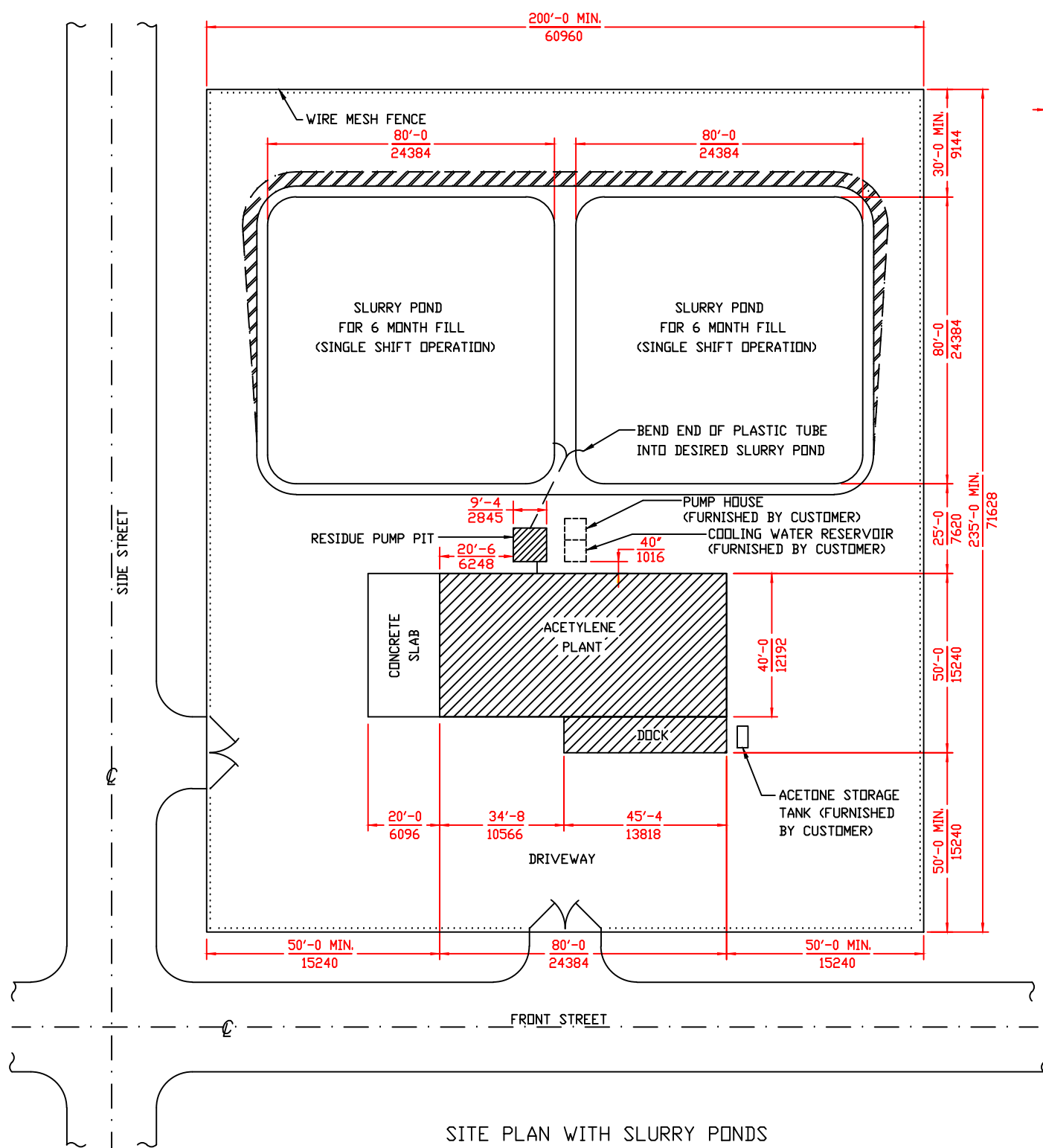
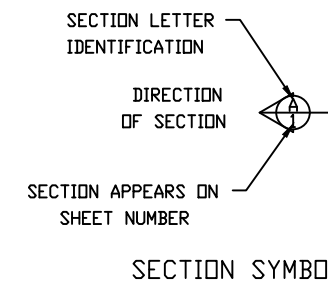
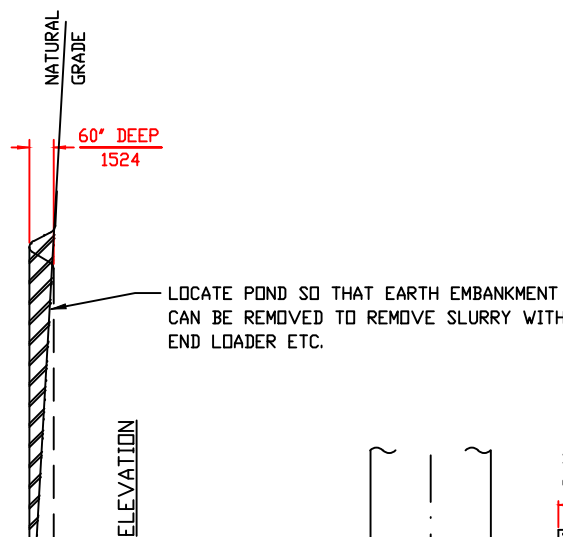


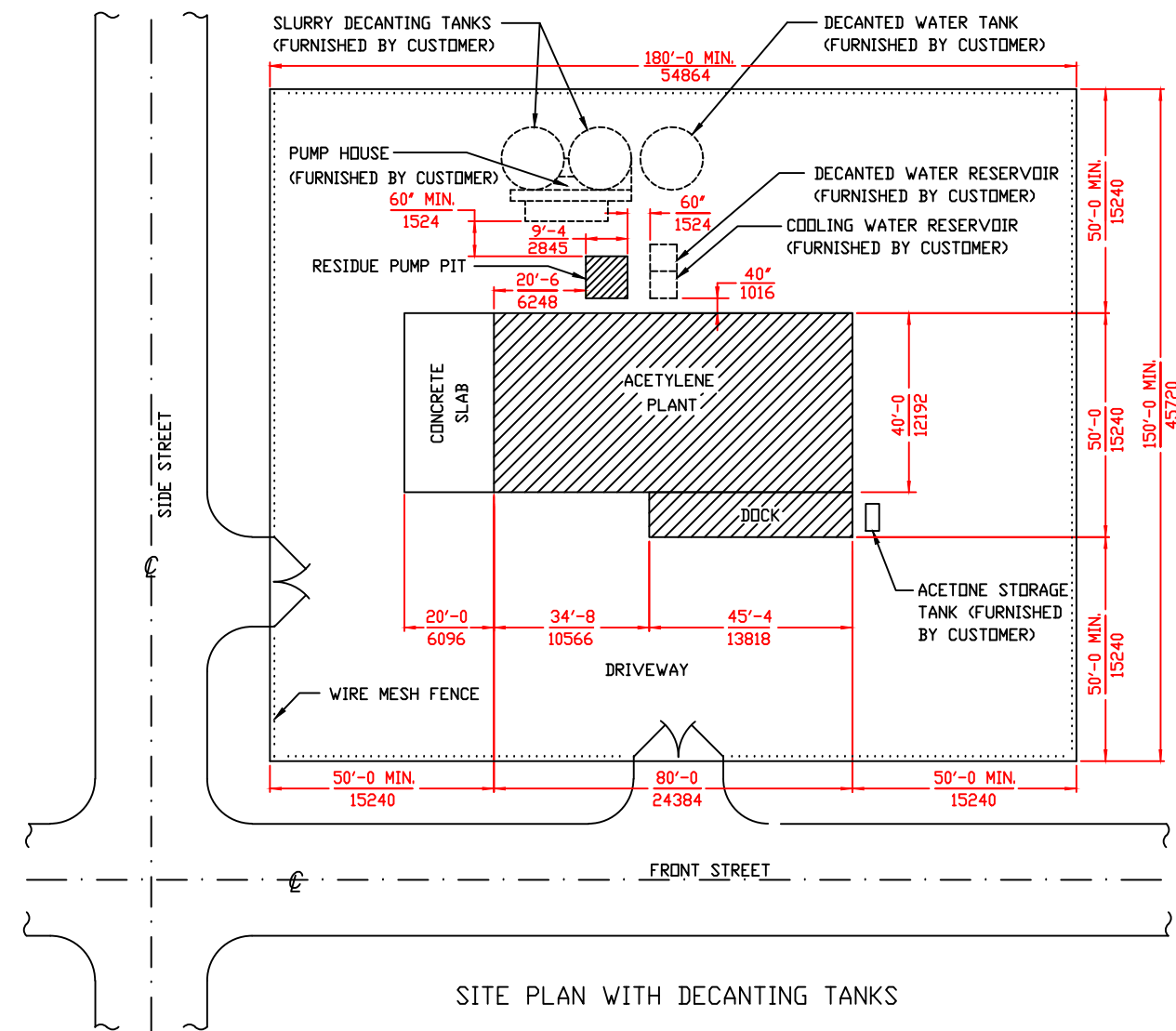
INDEX	
SHEET NO.	NAME
1	TYPICAL SITE PLAN
2	EXTERIOR ELEVATION
3	TYPICAL CROSS SECTION
4	PLANT EQUIPMENT LAYOUT
5	FOUNDATION PLAN
6	DETAILS & SECTIONAL VIEWS
7	RESIDUE PUMP PIT
8	ELECTRICAL CONDUIT PLAN
9	HEATING & LIGHTING PLAN
10	PROCESS & INSTRUMENTATION DIAGRAM
11	PROCESS & INSTRUMENTATION DIAGRAM
12	PROCESS & INSTRUMENTATION DIAGRAM



SITE PLAN WITH SLURRY PONDS



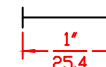
ELEVATION



SITE PLAN WITH DECANTING TANKS

ALL DIMENSIONS IN FEET-INCHES $\frac{\text{ft-in}}{\text{mm}}$
 OVER MILLIMETERS.
 DRAWING MADE TO U.S. STANDARD DIMENSIONS
 AND CONVERTED TO NEAREST MILLIMETER.

FOR REPRODUCTIONS OF THIS DRAWING,
 USE SCALE BELOW AS REFERENCE.



TOLERANCE
 UNLESS
 SPECIFIED:
 1/X ±1/64,
 .XX ±.005,
 .XX ±.02,
 L S ±1/2"

A CD# 12997

SHEET 1 OF 12
 TYPICAL SITE PLAN

COMPANY PROPRIETARY
 REPRODUCTION OR DISCLOSURE IN ANY WAY IS PROHIBITED WITHOUT THE
 EXPRESS WRITTEN PERMISSION OF REXARC INTERNATIONAL, INC.

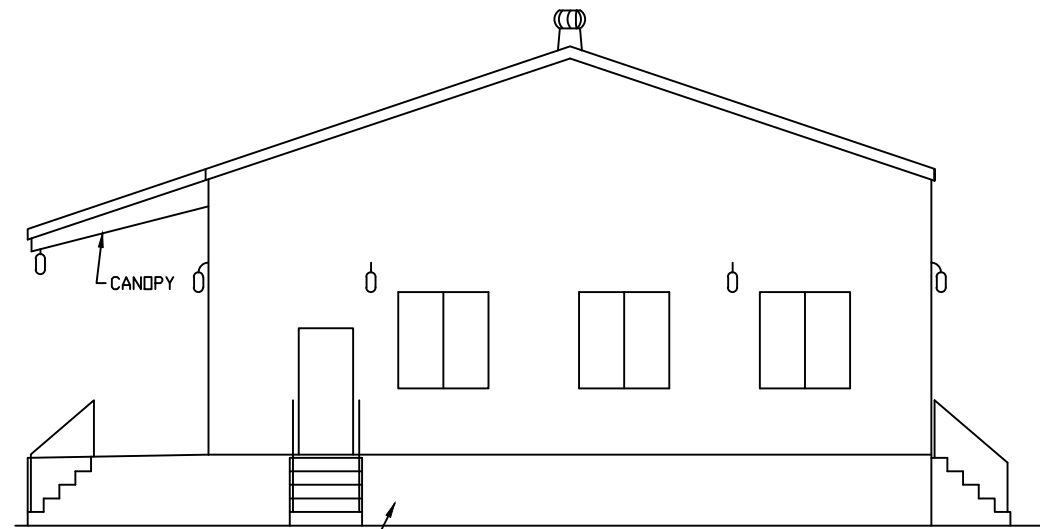
ACETYLENE COMPRESSING PLANT
 MODEL 18 SKID MOUNTED

Rexarc
 INTERNATIONAL, INC.

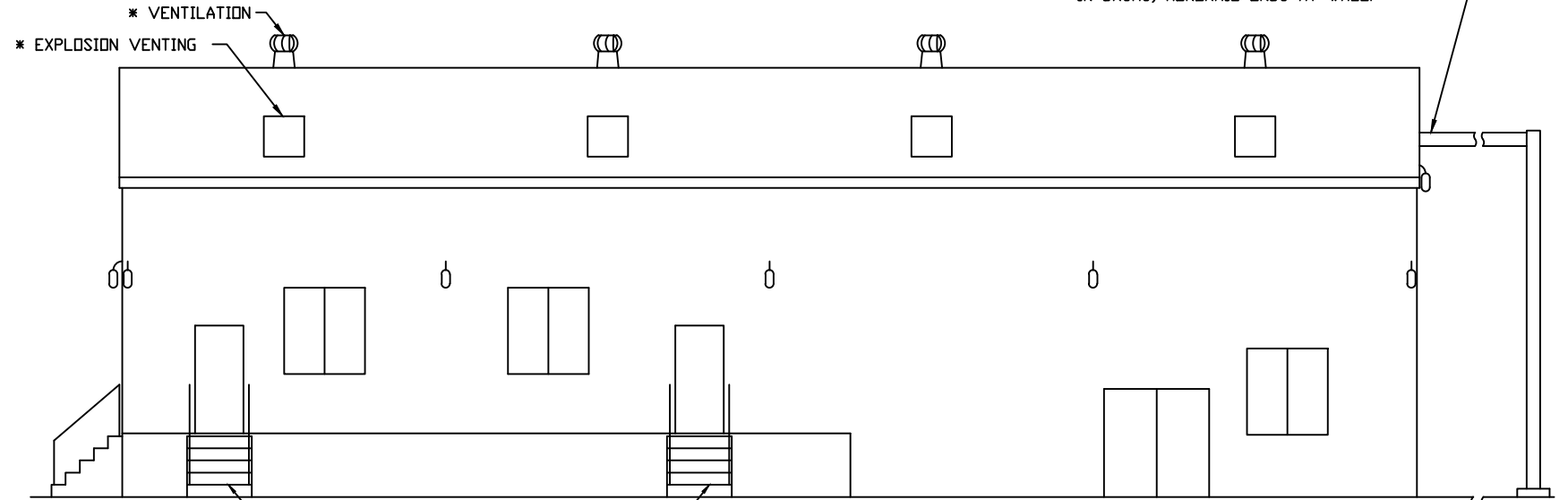
WEST ALEXANDRIA, OHIO, U.S.A.
 DRAWN BY FAA APPROVED BY
 DATE 02/14/14 SCALE 1:240 DWG. NO. 4-03-0251C

* AS REQUIRED BY NATIONAL FIRE PROTECTION ASSOCIATION PAMPHLET #51A

MONORAIL SHOWN FOR FLOW BINS. FOR CARBIDE IN DRUMS, MONORAIL ENDS AT WALL.

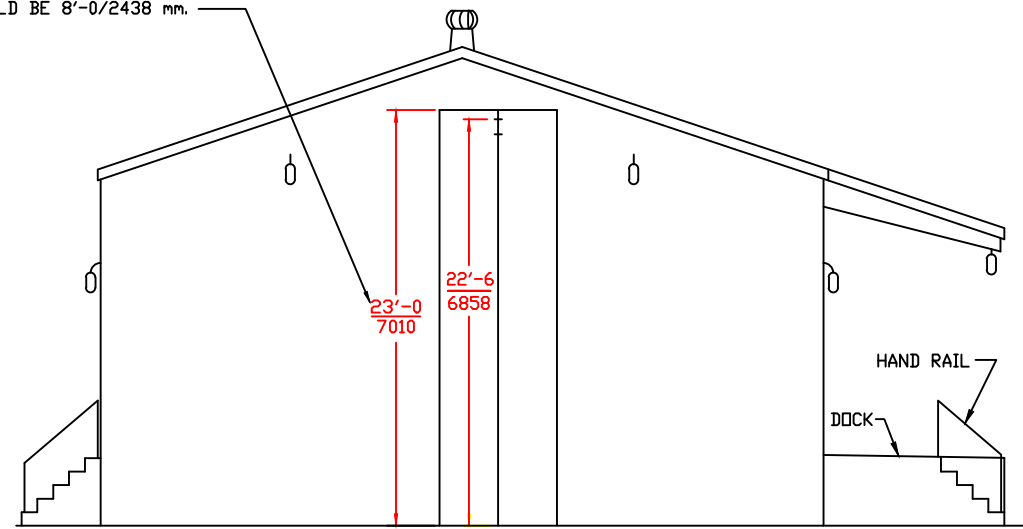


CONCRETE BLOCK FOUNDATION WALL END ELEVATION

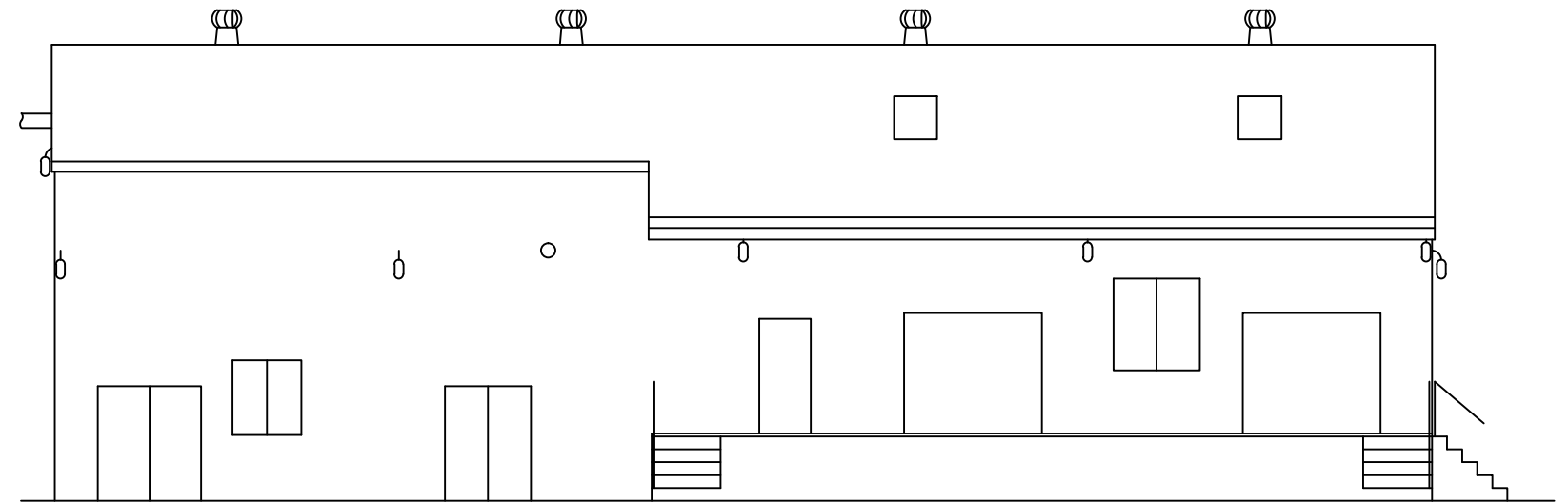


CONCRETE STEPS SIDE ELEVATION (BACK)

FOR FLOW BINS (SEE MONORAIL NOTE ABOVE)
FOR PLANTS USING CARBIDE IN DRUMS, DOOR HEIGHT SHOULD BE 8'-0"/2438 mm.



END ELEVATION



SIDE ELEVATION (FRONT)

ALL DIMENSIONS IN FEET-INCHES $\frac{\text{ft-in}}{\text{mm}}$
OVER MILLIMETERS.
DRAWING MADE TO U.S. STANDARD DIMENSIONS
AND CONVERTED TO NEAREST MILLIMETER.

FOR REPRODUCTIONS OF THIS DRAWING,
USE SCALE BELOW AS REFERENCE.



SHEET 2 OF 12
EXTERIOR ELEVATION

COMPANY PROPRIETARY
REPRODUCTION OR DISCLOSURE IN ANY WAY IS PROHIBITED WITHOUT THE
EXPRESS WRITTEN PERMISSION OF REXARC INTERNATIONAL INC.

ACETYLENE COMPRESSING PLANT
MODEL 18 SKID MOUNTED

Rexarc
INTERNATIONAL, INC.

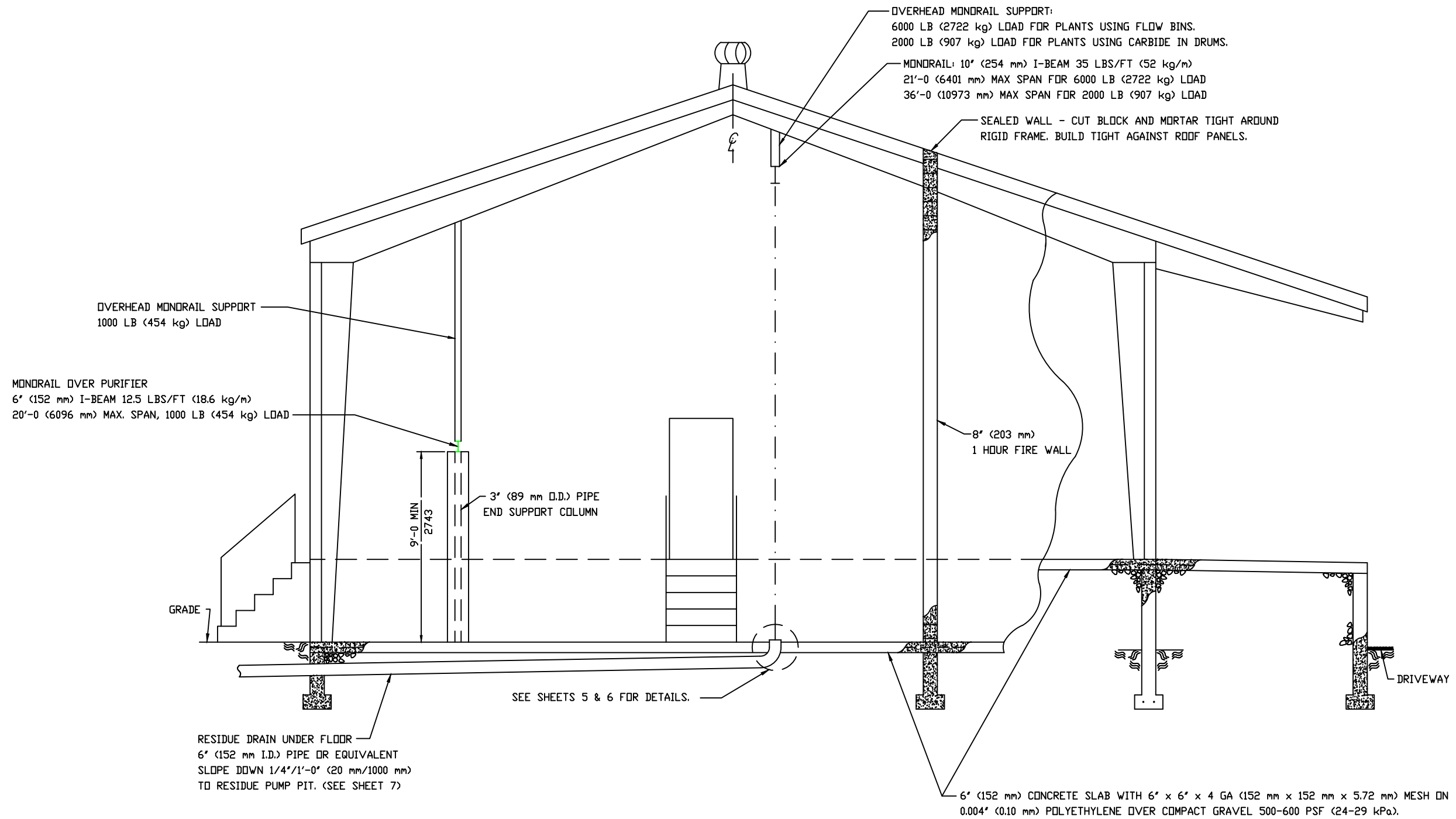
WEST ALEXANDRIA, OHIO, U.S.A.

DRAWN BY FAA APPROVED BY

DATE 02/14/14 SCALE 1:64 DWG. NO. 4-03-0251C

A CD# 12997

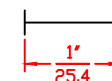
TOLERANCE
UNLESS
SPECIFIED:
1/X ±1/64,
XX ±0.05,
XX ±0.2,
L S ±1/2"



SHEET 3 OF 12
TYPICAL CROSS SECTION

ALL DIMENSIONS IN FEET-INCHES $\frac{\text{ft-in}}{\text{mm}}$
OVER MILLIMETERS.
DRAWING MADE TO U.S. STANDARD DIMENSIONS AND
CONVERTED TO NEAREST MILLIMETER.
THESE FOUNDATION PLANS SUBJECT TO LOCAL
BUILDING CODES WHERE APPLICABLE.

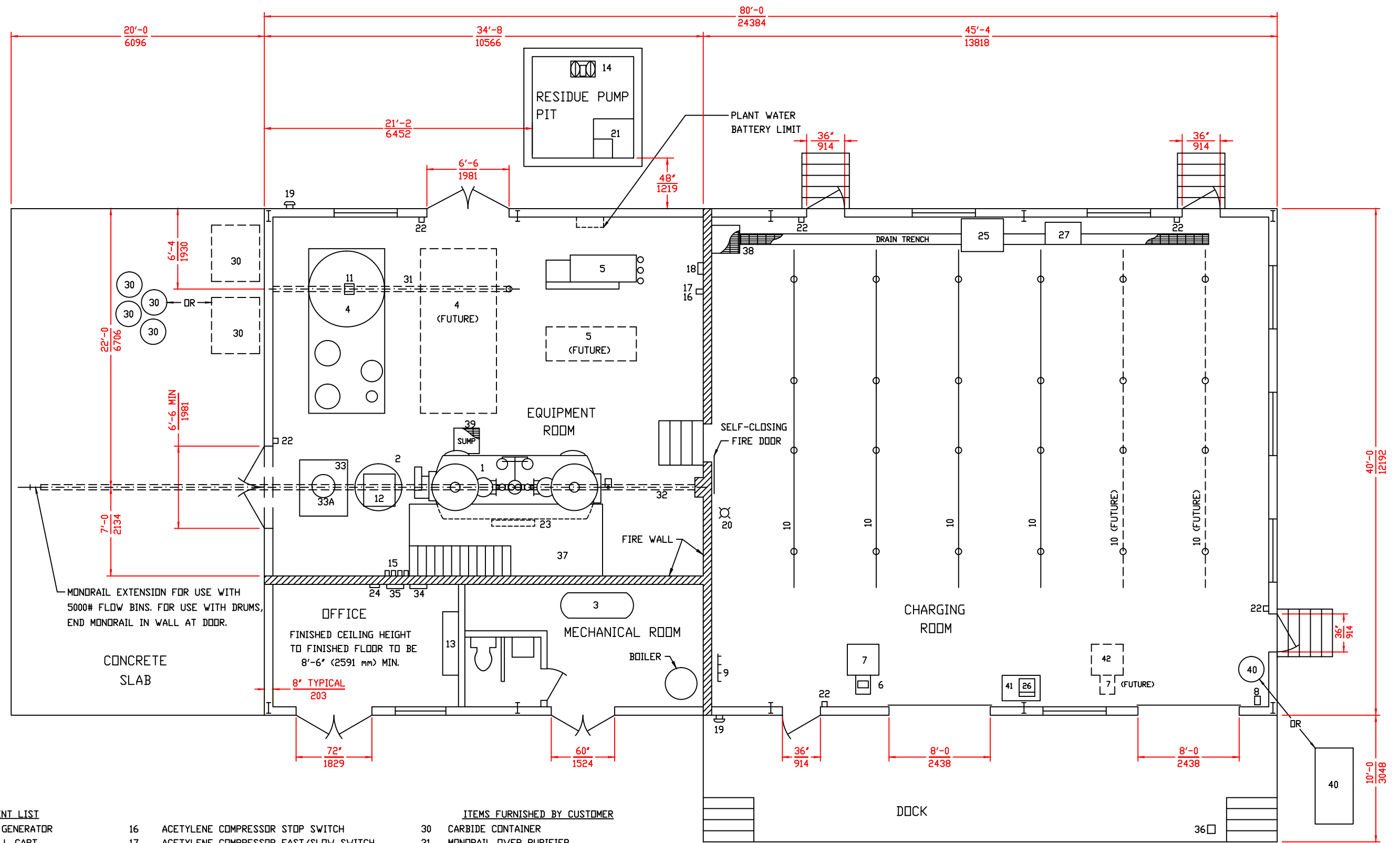
FOR REPRODUCTIONS OF THIS DRAWING,
USE SCALE BELOW AS REFERENCE.



TOLERANCE
UNLESS
SPECIFIED:
1/XX ±1/64,
XX ±.005,
XX ±.02,
L S ±1/2"

COMPANY PROPRIETARY REPRODUCTION OR DISCLOSURE IN ANY WAY IS PROHIBITED WITHOUT THE EXPRESS WRITTEN PERMISSION OF REXARC INTERNATIONAL, INC.	
ACETYLENE COMPRESSING PLANT MODEL 18 SKID MOUNTED	
Rexarc INTERNATIONAL, INC. OHIO, U.S.A.	
WEST ALEXANDRIA, DRAWN BY FAA	APPROVED BY DATE 02/14/14 SCALE 1:32 DWG. NO. 4-03-0251C

A CD# 12997



DET. EQUIPMENT LIST

- 1 ACETYLENE GENERATOR
- 2 CARBIDE FILL CART
- 3 AIR COMPRESSOR
- 4 PROCESS SKID
- 5 PUMPING SKID
- 6 ACETYLENE MONITOR (USA PLANTS)
- 7 DIGITAL SCALE
- 8 ACETONE PUMP
- 9 DRAINBACK MANIFOLD
- 10 CHARGING MANIFOLD
- 11 CHAIN HOIST
- 12 AIR HOIST
- 13 MOTOR CONTROL CENTER
- 14 RESIDUE PUMP
- 15 GENERATOR CONTROL SWITCHES

- 16 ACETYLENE COMPRESSOR STOP SWITCH
- 17 ACETYLENE COMPRESSOR FAST/SLOW SWITCH
- 18 PRESSURE SWITCH ENCLOSURE
- 19 ALARM BELL
- 20 GENERATOR PILOT LIGHT
- 21 RESIDUE COLLECTOR
- 22 EMERGENCY STOP PUSHBUTTON
- 23 LUBRICATOR SYSTEM (PART OF GENERATOR)
- 24 LUBRICATOR CONTROL PANEL (PART OF GENERATOR)
- 25 MC CYLINDER RACK (USA PLANTS)
- 26 BENCH SCALE (USA PLANTS)
- 27 B CYLINDER RACK (USA PLANTS)

ITEMS FURNISHED BY CUSTOMER

- 30 CARBIDE CONTAINER
- 31 MONORAIL OVER PURIFIER
- 32 MONORAIL OVER GENERATOR
- 33A CARBIDE CONTAINER STAND (USA PLANTS)
- 34 TILTING TRUNNION (FOR DRUMS)
- 35 MAIN SERVICE PANEL
- 36 LIGHTING PANEL
- 37 CYLINDER VISE
- 38 OPERATOR'S PLATFORM
- 39 DRAIN TRENCH & BASIN GRATING (NON-SPARKING)
- 39 SUMP GRATING (NON-SPARKING)
- 40 ACETONE DRUM OR TANK
- 41 BENCH (USA PLANTS)
- 42 PLATE OVER FUTURE SCALE PIT

ALL DIMENSIONS IN FEET-INCHES $\frac{\text{ft-in}}{\text{mm}}$
 OVER MILLIMETERS.
 DRAWING MADE TO U.S. STANDARD DIMENSIONS
 AND CONVERTED TO NEAREST MILLIMETER.

FOR REPRODUCTIONS OF THIS DRAWING,
 USE SCALE BELOW AS REFERENCE.



TOLERANCE
 UNLESS
 SPECIFIED:
 1/XX ±1/64,
 .XX ±.005,
 .XX ±.02,
 L S ±1/2"

A CD# 12997

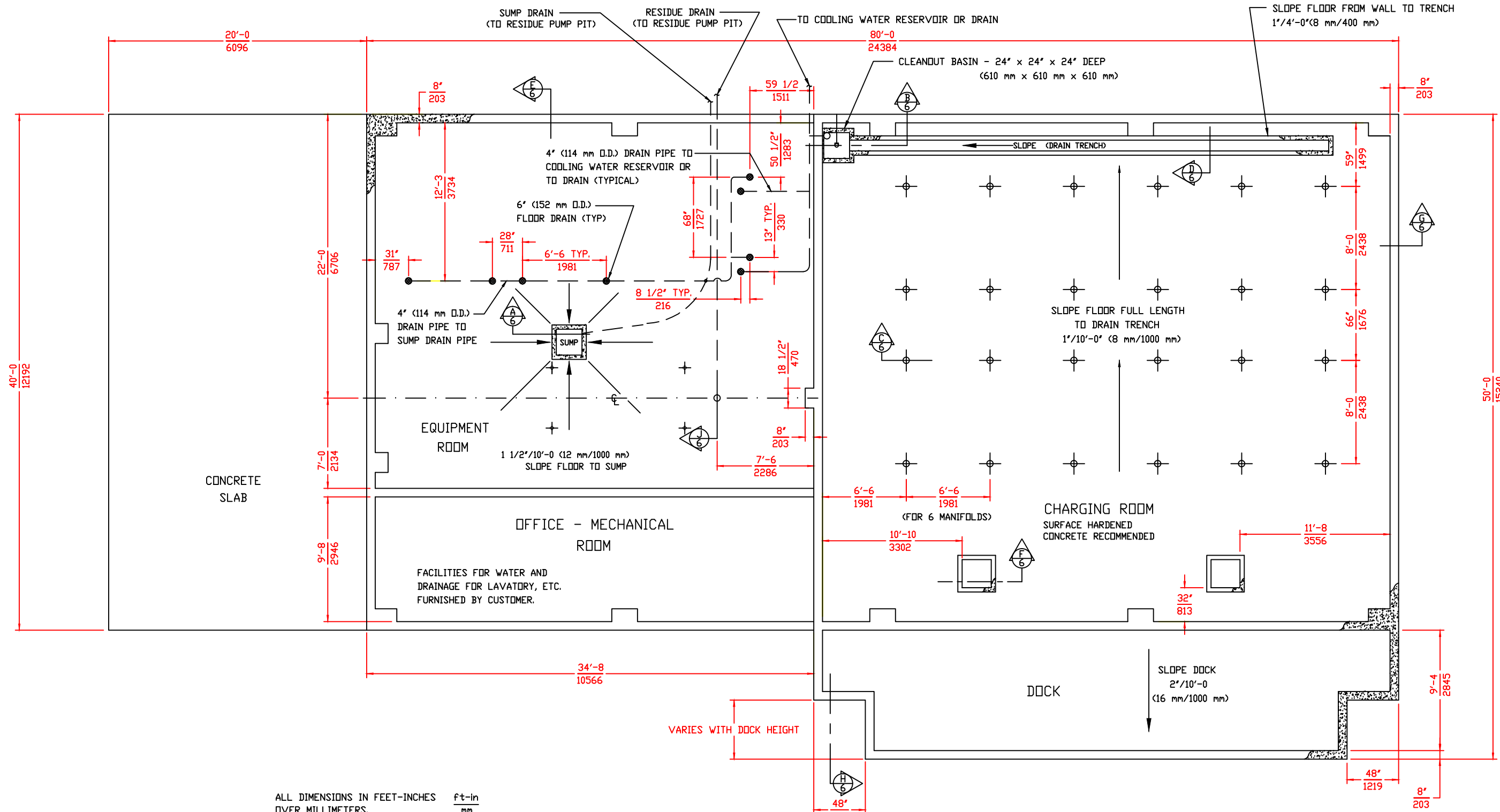
SHEET 4 OF 12
 PLANT EQUIPMENT LAYOUT

COMPANY PROPRIETARY
 REPRODUCTION OR DISCLOSURE IN ANY WAY IS PROHIBITED WITHOUT THE
 EXPRESS WRITTEN PERMISSION OF REXARC INTERNATIONAL, INC.

ACETYLENE COMPRESSING PLANT
 MODEL 18 SKID MOUNTED

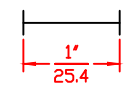
Rexarc
 INTERNATIONAL, INC.

WEST ALEXANDRIA, OHIO, U.S.A.
 DRAWN BY FAA APPROVED BY
 DATE 02/14/14 SCALE 1:48 SVG. NO. 4-03-0251C



ALL DIMENSIONS IN FEET-INCHES $\frac{\text{ft-in}}{\text{mm}}$
 OVER MILLIMETERS.
 DRAWING MADE TO U.S. STANDARD DIMENSIONS
 AND CONVERTED TO NEAREST MILLIMETER.
 (EXCEPT MILLIMETERS TO 2 DECIMAL PLACES
 WHERE APPLICABLE)
 THESE FOUNDATION PLANS SUBJECT TO LOCAL
 BUILDING CODES WHERE APPLICABLE.

FOR REPRODUCTIONS OF THIS DRAWING,
 USE SCALE BELOW AS REFERENCE.



SHEET 5 OF 12
 FOUNDATION PLAN

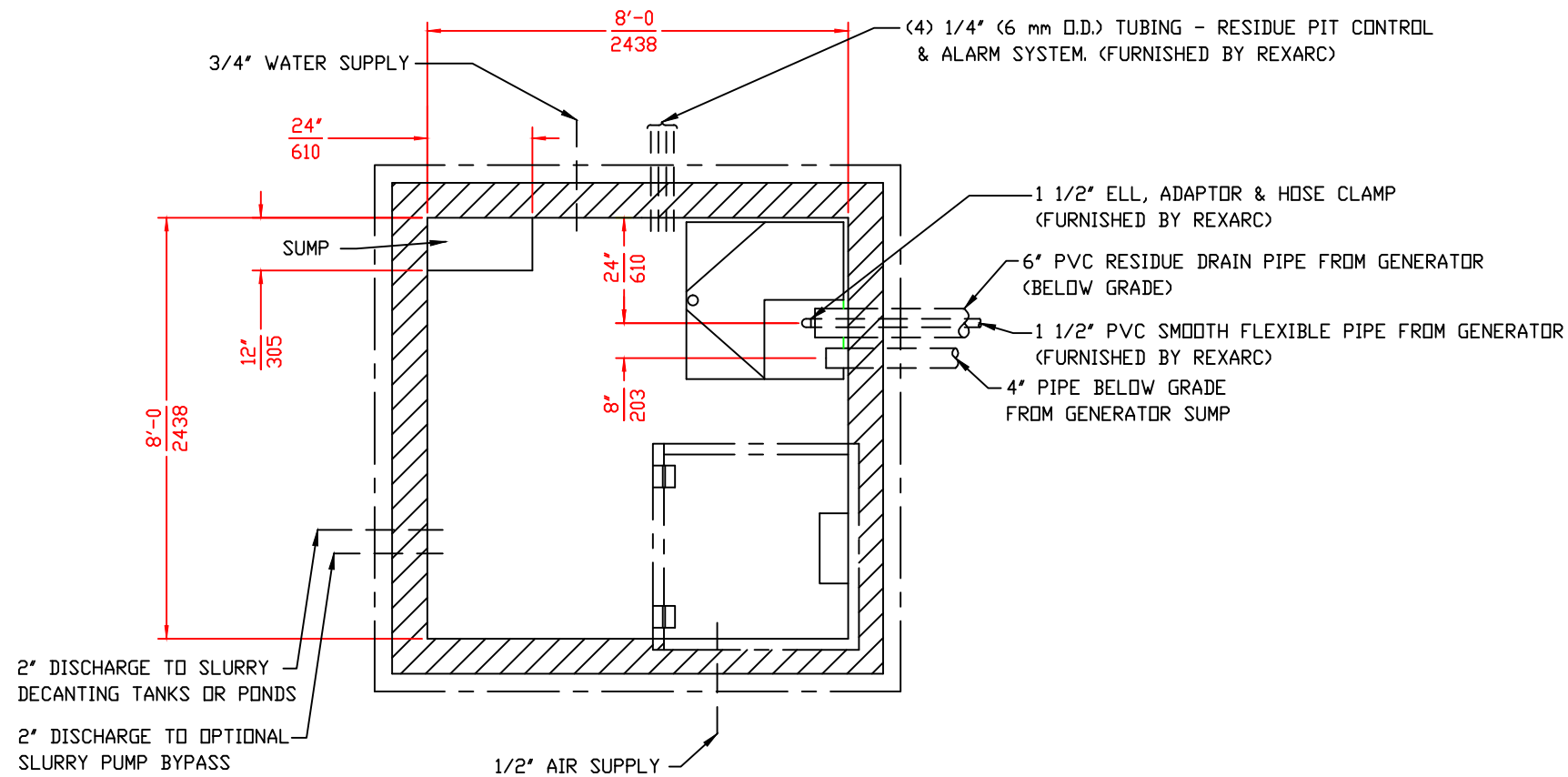
COMPANY PROPRIETARY
 REPRODUCTION OR DISCLOSURE IN ANY WAY IS PROHIBITED WITHOUT THE
 EXPRESS WRITTEN PERMISSION OF REXARC INTERNATIONAL, INC.
 ACETYLENE COMPRESSING PLANT
 MODEL 18 SKID MOUNTED

Rexarc
 INTERNATIONAL, INC. OHIO, U.S.A.

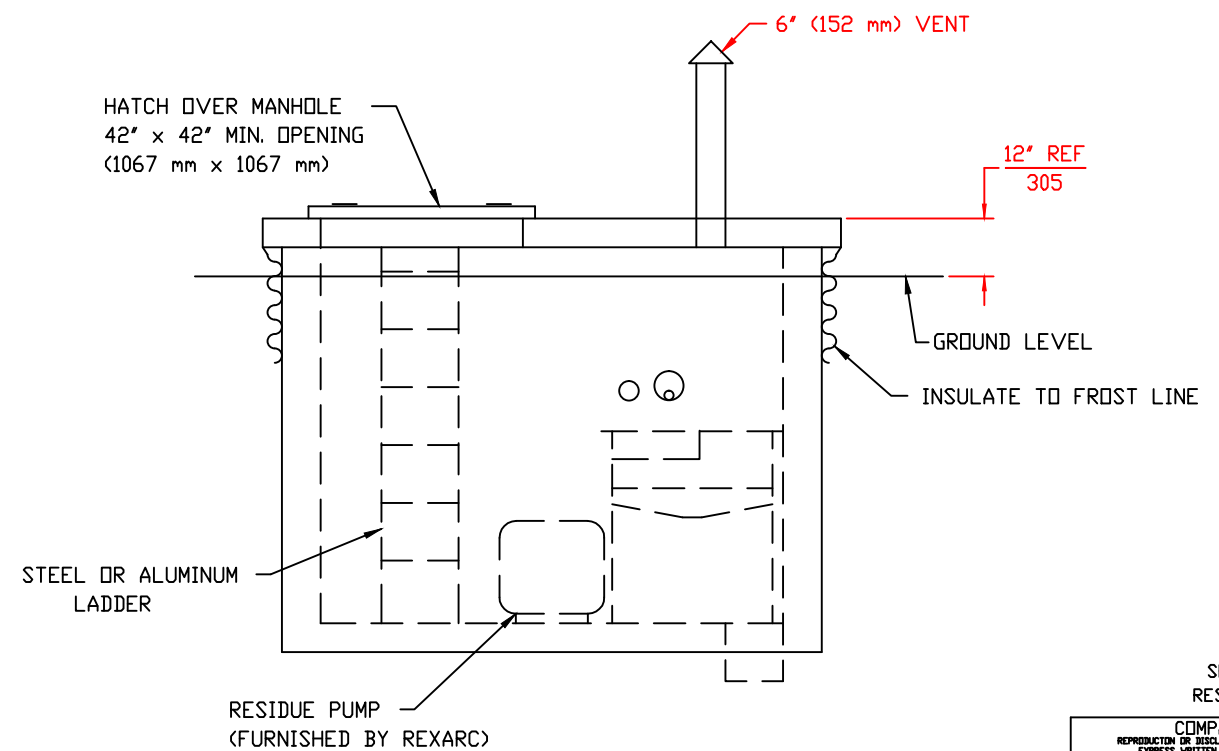
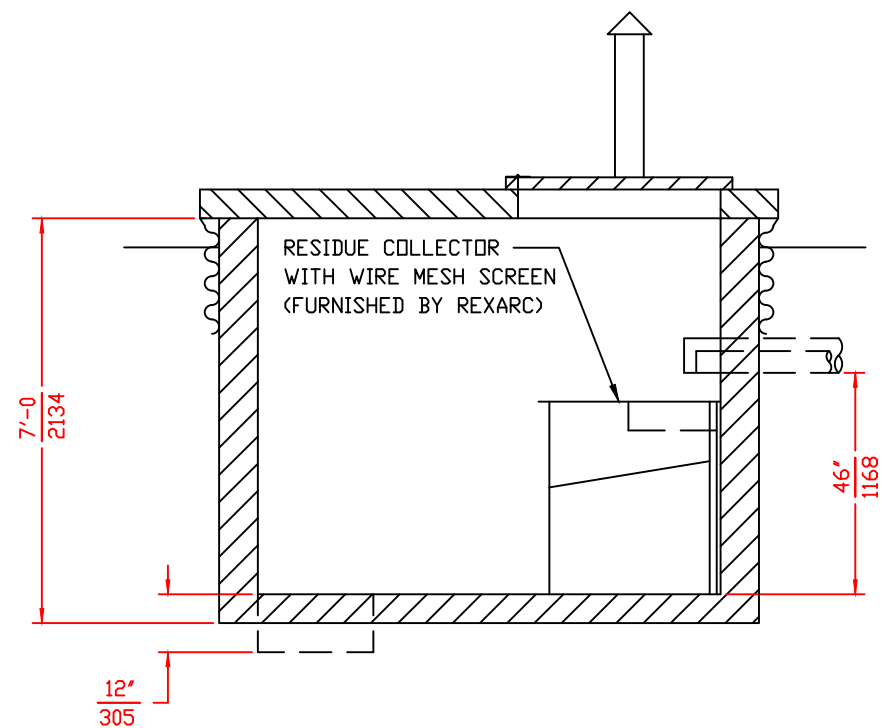
TOLERANCE
 UNLESS
 SPECIFIED:
 1/XX ±1/64,
 .XXX ±.005,
 .XX ±.02,
 L S ±1/2"

WEST ALEXANDRIA,
 DRAWN BY FAA
 APPROVED BY
 DATE 02/14/14 SCALE 1:48 DWG. NO. 4-03-0251C

A CD# 12997



- 1) SLOPE FLOOR TO SUMP 1"/10'-0" (8 mm/1000 mm)
- 2) ALL DIMENSIONS IN FEET-INCHES $\frac{\text{ft-in}}{\text{mm}}$ OVER MILLIMETERS.
- 3) DRAWING MADE TO U.S. STANDARD DIMENSIONS AND CONVERTED TO NEAREST MILLIMETER.



SHEET 7 OF 12
RESIDUE PUMP PIT

COMPANY PROPRIETARY
REPRODUCTION OR DISCLOSURE IN ANY WAY IS PROHIBITED WITHOUT THE EXPRESS WRITTEN PERMISSION OF REXARC INTERNATIONAL, INC.

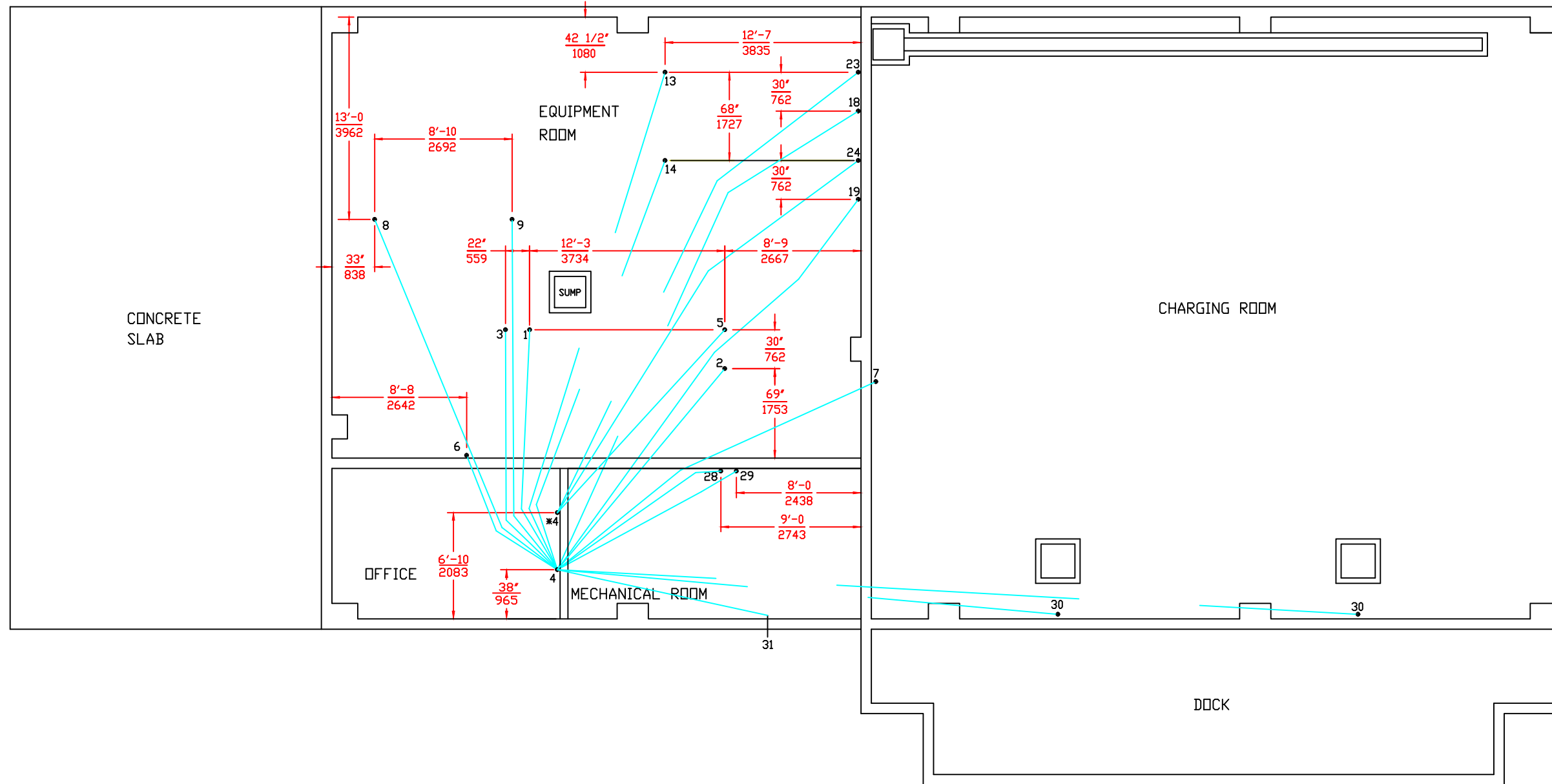
ACETYLENE COMPRESSING PLANT
MODEL 18 SKID MOUNTED

Rexarc
INTERNATIONAL, INC.

WEST ALEXANDRIA, OHIO, U.S.A.
DRAWN BY FAA APPROVED BY
DATE 02/14/14 SCALE - DWG. NO. 4-03-0251C

TOLERANCE UNLESS SPECIFIED:
1/XX ±1/64,
XX ±.005,
XX ±.02,
L S ±1/2"

A CD# 12997

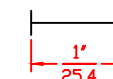


() MIN. CONDUIT SIZE
 [] ACTUAL CONDUIT SIZE AT DEVICE
 * INTRINSICALLY SAFE WIRING

- | | |
|---|---|
| 1 GENERATOR HOPPER #1 MOTOR (1/2") [3/4"] | 18 ACETYLENE COMPRESSOR #1 (STOP SWITCH & FAST/SLOW SWITCH) (3/4") [3/4"] |
| 2 GENERATOR HOPPER #2 MOTOR (1/2") [3/4"] | 19 ACETYLENE COMPRESSOR (FUTURE) (STOP SWITCH & FAST/SLOW SWITCH) (3/4") [3/4"] |
| 3 GENERATOR AGITATOR MOTOR (1/2") [3/4"] | *23 ACETYLENE COMPRESSOR #1 PRESSURE SWITCH ENCLOSURE (1/2") [1/2"] |
| 4 MOTOR CONTROL CENTER | *24 ACETYLENE COMPRESSOR (FUTURE) PRESSURE SWITCH ENCLOSURE (1/2") [1/2"] |
| *5 GENERATOR PRESSURE SWITCH ENCLOSURE (1/2") [1/2"] | 28 AIR COMPRESSOR MOTOR (3/4") [1"] |
| 6 GENERATOR CONTROL SWITCHES (3/4") [3/4"] | 29 AIR COMPRESSOR PRESSURE SWITCH (1/2") [1/2"] |
| 7 GENERATOR PILOT LIGHT (1/2") [1/2"] | 30 ACETYLENE MONITOR (3/4") [3/4"] (USA PLANTS) |
| 8 PROCESS SKID #1 (SCRUBBER LEVEL CONTROLS) (1/2") [3/4"] | 31 ALARM BELL (1/2") [3/4"] |
| 9 PROCESS SKID (FUTURE) (SCRUBBER LEVEL CONTROLS) (1/2") [3/4"] | |
| 13 ACETYLENE COMPRESSOR MOTOR #1 (1 1/4") [1 1/2"] | |
| 14 ACETYLENE COMPRESSOR MOTOR (FUTURE) (1 1/4") [1 1/2"] | |

ALL DIMENSIONS IN FEET-INCHES $\frac{ft-in}{mm}$
 OVER MILLIMETERS.
 DRAWING MADE TO U.S. STANDARD DIMENSIONS
 AND CONVERTED TO NEAREST MILLIMETER.

FOR REPRODUCTIONS OF THIS DRAWING,
 USE SCALE BELOW AS REFERENCE.



SHEET 8 OF 12
 ELECTRICAL CONDUIT PLAN

COMPANY PROPRIETARY
 REPRODUCTION OR DISCLOSURE IN ANY WAY IS PROHIBITED WITHOUT THE
 EXPRESS WRITTEN PERMISSION OF REXARC INTERNATIONAL, INC.

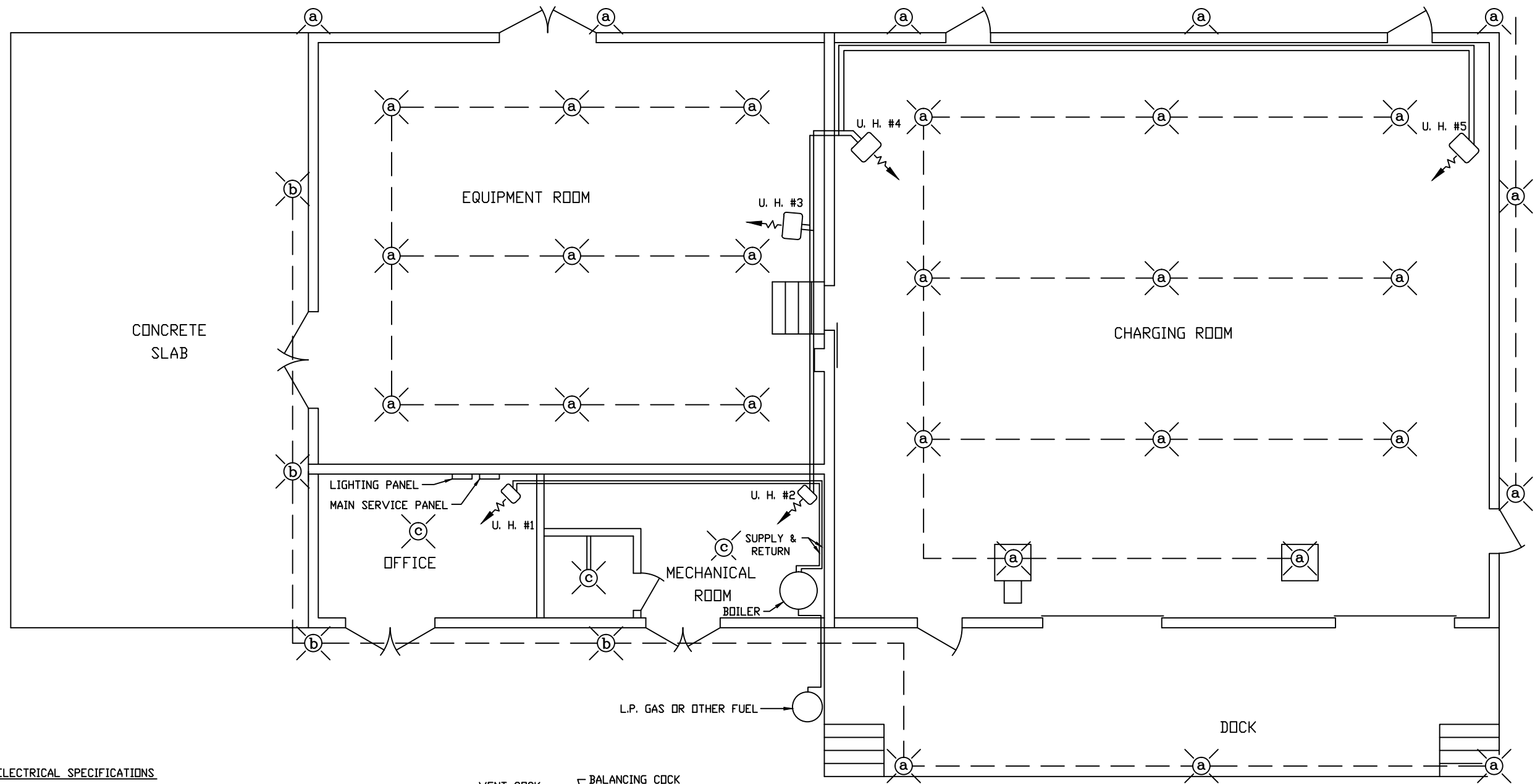
ACETYLENE COMPRESSING PLANT
 MODEL 18 SKID MOUNTED

Rexarc
 INTERNATIONAL, INC.

WEST ALEXANDRIA, OHIO, U.S.A.
 DRAWN BY FAA APPROVED BY
 DATE 02/14/14 SCALE 1:48 DWG. NO. 4-03-0251C

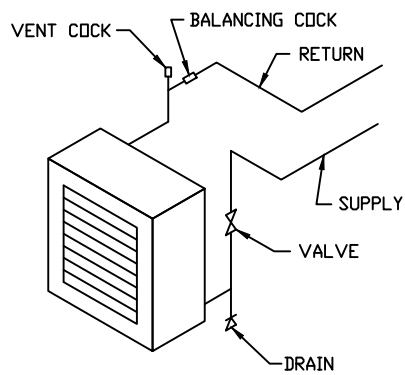
A CD# 12997

TOLERANCE
 UNLESS
 SPECIFIED:
 1/XX ±1/64,
 .XXX ±.005,
 .XX ±.02,
 .X ±.1/2"



ELECTRICAL SPECIFICATIONS

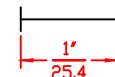
- 1 ALL ELECTRICAL WIRING SHALL BE INSTALLED IN ACCORDANCE WITH NATIONAL FIRE PROTECTION ASSOCIATION PAMPHLET #51A.
- 2 ALL LIGHTS SHALL BE CONTROLLED FROM A PANEL IN THE MECHANICAL ROOM.
- 3 INSTALL SEALING FITTINGS ON ALL CONDUIT LEAVING COMPRESSING PLANT BUILDING.
- 4 FIXTURE (a) CLASS #1 GROUP A (CROUSE HINDS # EVA 2921 PENDANT) LOCATED 10'-0" (3048 mm) ABOVE FINISHED FLOOR EXCEPT AROUND GENERATOR & SCALES. LIGHT FIXTURE ABOVE BOTH SCALE PLATFORMS AT 8'-0" (2438 mm) ABOVE FINISHED FLOOR.
- 5 FIXTURE (b) (CROUSE HINDS # VDA 23 GP) OR EQUIVALENT.
- 6 FIXTURE (c) (CROUSE HINDS - PORCELAIN LAMP HOLDER) OR EQUIVALENT.
- 7 CONDUIT MAY BE INSTALLED IN FLOOR SLABS.
- 8 ALL ITEMS ABOVE FURNISHED & INSTALLED BY ELECTRICAL CONTRACTOR.



(U. H.) UNIT HEATER PIPING

- A COPPER ALLOYS CONTAINING MORE THAN 65% COPPER ARE NOT TO BE USED WHERE THEY MAY BE EXPOSED TO ACETYLENE.
- B UNIT HEATERS U. H. #3 THROUGH #5 ARE TO BE CLASS 1 GROUP D.
- C HEATING SYSTEM FURNISHED & INSTALLED BY HEATING CONTRACTOR.

FOR REPRODUCTIONS OF THIS DRAWING,
USE SCALE BELOW AS REFERENCE.



TOLERANCE
UNLESS
SPECIFIED:
1/XX ±1/64,
XX ±.005,
XX ±.02,
L S ±1/2"

A CD# 12997

SHEET 9 OF 12
HEATING AND LIGHTING PLAN

COMPANY PROPRIETARY
REPRODUCTION OR DISCLOSURE IN ANY WAY IS PROHIBITED WITHOUT THE
EXPRESS WRITTEN PERMISSION OF REXARC INTERNATIONAL, INC.

ACETYLENE COMPRESSING PLANT
MODEL 18 SKID MOUNTED

Rexarc
INTERNATIONAL, INC.

WEST ALEXANDRIA, OHIO, U.S.A.
DRAWN BY FAA APPROVED BY
DATE 02/14/14 SCALE 1:48 DWG. NO. 4-03-0215C